

Ikegami

HD
High Definition

Advanced Technology
Compacted Light Weight
Full Digital HDTV Portable Camera System

HDK-75EX





The HDK-75EX is a high performance full digital portable camera with compacted light weight and sophisticated design with integrated fiber adaptor.

Multi-standard / Simulcast Broadcasting

2/3-inch 2,200,000-pixel IT CCDs

2/3-inch 2,200,000-pixel 1080i IT CCD image sensors are employed to achieve superb picture quality with a horizontal resolution of 1,000 lines and a S/N ratio of 56dB.

Simulcast (High-end HDTV and NTSC Camera)

Using a down converter incorporated in the CCU as standard, the (HDK-75EX) can be operated as a high-end NTSC studio camera. A high sampling frequency of 28.64MHz achieves maximum resolution of 900 TV lines in the NTSC format. Both HDTV video and SDTV (NTSC) are provided simultaneously from the CCU and in both digital and analog form. Monitoring video signals (WFM and PM) are likewise provided in both HDTV and SDTV to adapt to different system installations and to permit continued use of conventional monitoring.

12bit Full Digital

Incorporating a next-generation digital process ASIC

Using a full digital process ASIC (Application Specific Integrated Circuit), precision designed at 0.18um rule, the video signals are digitalized with 12-bit A/D conversion and up to 38-bit internal digital processing (quantization).

DTL Correction

A detail correction system, including digitally processed horizontal, vertical and diagonal correction signal for red, green and blue video, is incorporated into the camera head, and obtains noise-free full resolution HDTV picture quality even if the camera is used in stand-alone configuration.

Independent DTL

With Independent DTL system in the CCU, the type and amount of compensation can be optimized for the different requirements of HDTV and SDTV.



Next-generation digital process ASIC (0.18μm design rule)

Sophisticated features made possible with digital technologies

Six-axis + Two-axis Color Corrector

Includes a color correction function that enables hue and saturation to be adjusted for each of the six primary colors (R, G, B, Cy, Y, Mg), plus another function to make color correction of two user-selected colors of the subject.

Enhanced Digital DTL

Improved sensuous expressions such as texture and sheen, and richer reproduction of details in skin tone in dark backgrounds.

Super KNEE

The Knee system makes corrections without changing the hue of the highlighted parts and produces a more natural highlight appearance, rather than washing it out.

Clear VF DTL function

This function makes a difference in the edging of the image exclusively in the viewfinder, to make the precise point of focus easier to find, and to make it easier for the cameraperson to focus.

Wide-band DTL function

Wide-band edging gives the impression that fine parts of subjects or high frequency images have a higher resolution.

Evolutionary Features / Designed for DTV

Digital Processing Camera Control Unit, the CCU-790A

The Ikegami HDK-series HDTV cameras are designed as Multi-Use Cameras to meet the format requirements of HDTV and SDTV, incorporating next-generation 0.18um ASICs in the Camera Control Unit, the CCU-790A.

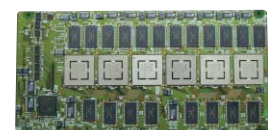
Also using advanced conversion ASICs, an Optional Engine Board has been developed to achieve Frame and Multi-Format Conversion. (24p, 30p, 720p, 1080i, etc).



CCU-790A



CCU-790A rear



Engine Board (option)

Superior System Accessories

High Performance Viewfinders

For portable application, it is equipped with a 2-inch 16:9 high definition viewfinder. For studio application, a 5-inch B/W viewfinder as option is available. Employing a magnifying eye-piece in the 2-inch viewfinder, visibility is further improved. In addition, a 9-inch color LCD Viewfinder with easy panning is also available as option.



The VFL-900HD 9-inch Wide Screen Color LCD Viewfinder

Employs High Resolution 9-inch wide screen LCD Panel, providing wide viewing angle of 165 degree in all direction and fast response time of 5mS.



Space-Saving Design, BS-79

A half-rack base station BS-79 is available, permitting full SMPTE fiber cable extension with a compact base station. It supports HDTV/SDTV simulcast operation with an up/down converter. It is suitable for small-sized HD Truck and rental/ flight-pack systems.

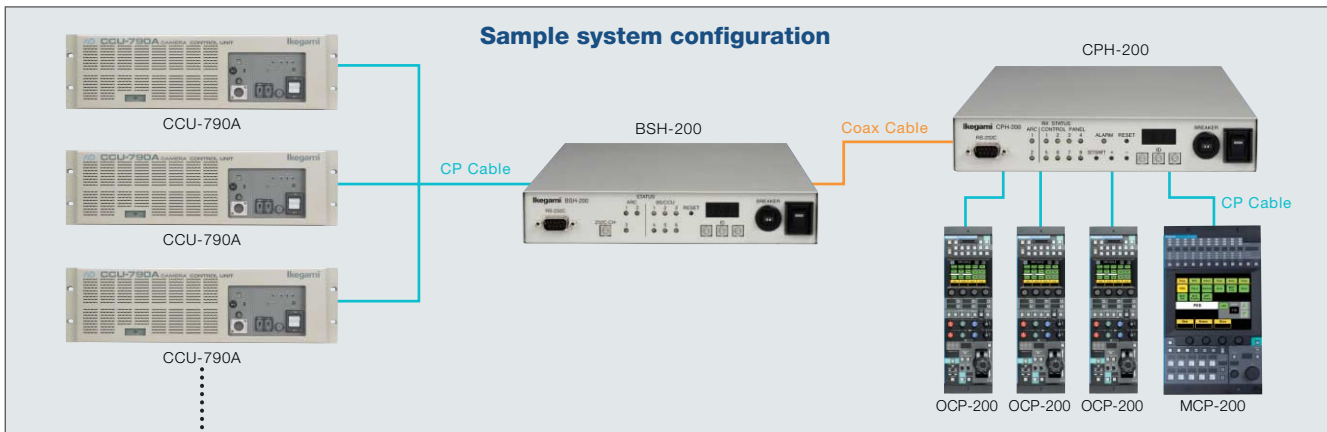


BS-79 front

BS-79 rear

OCP-200/MCP-200, New Control Panel System

The OCP-200 / MCP-200 is a new Arc-net based control panel system offered as an alternate to the traditional Ikegami style control panels. The Arc-net system allows any OCP-200 to control any camera with assignment set at the OCP itself. System wiring is simplified with control of up to 96 cameras via a single coax cable between CCU locations and video control locations. The OCP-200 and MCP-200 include touch screen LCDs. The depth-of-control of the OCP-200 can be selected from basic to complete to fit the customers' operating discipline.



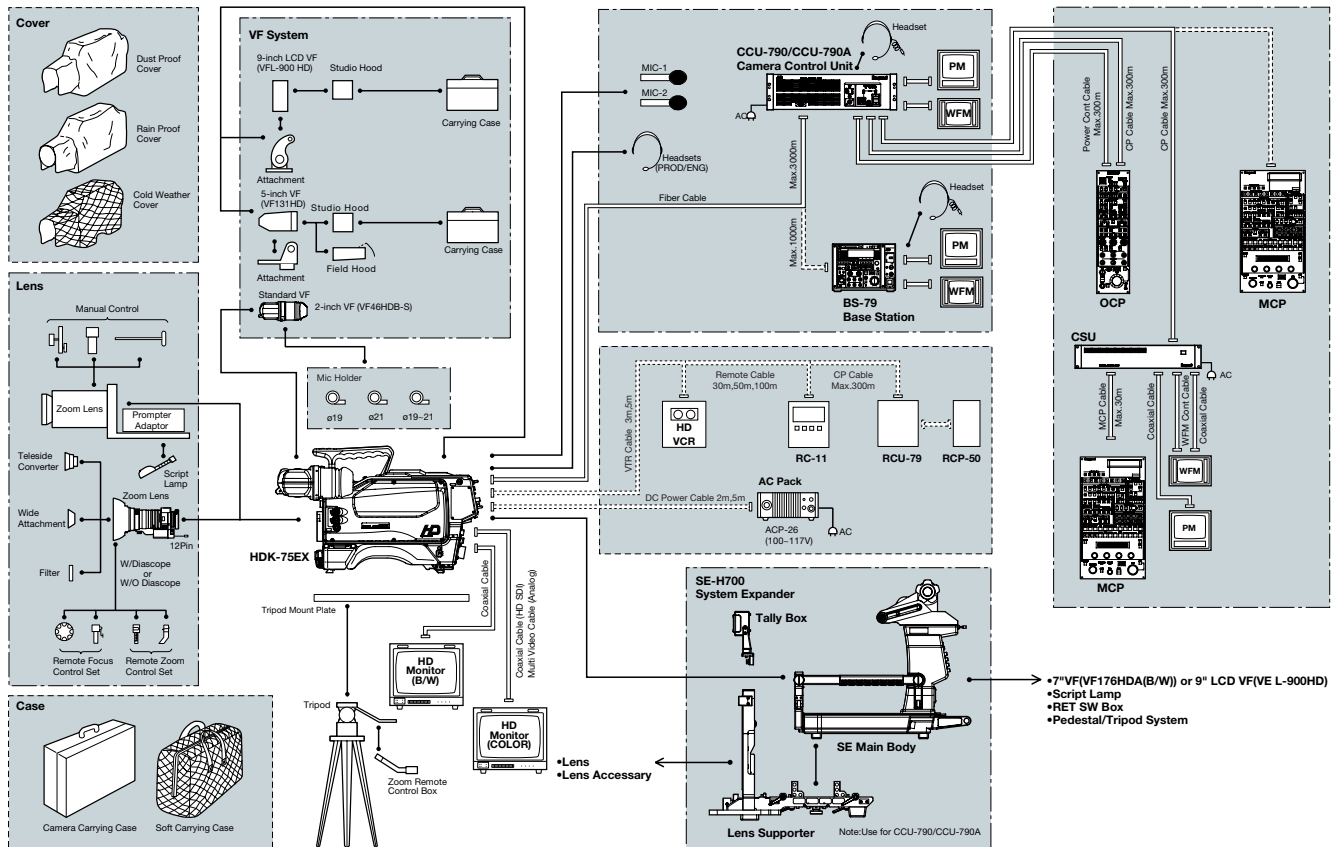
New System Expander, SE-H700

The SE-H700 enables the use of the 7-inch viewfinder and full studio lenses with HDK-75EX. Compacted light weight body with easy to remove and install the camera.



SE-H700 System Expander

System Applications



Ratings

- Scanning system
 - HDK-75EX1125 Interlaced (59.94Hz or 60Hz)
 - CCU-790A1080 lines 59.94 or 60Hz
480 lines 59.94 Hz
720 lines 59.94 Hz
 - CCD image sensor2/3-inch 2,200,000 pixel IT CCD
 - Lens mountBTA S-1005B (Standard)
 - Ambient temperature-20°C~+45°C (-4F~ +113F)
 - Relative humidity30%~90% (No-condensation)
 - Operating voltage11~16V
 - Weight (Approx)
 - Camera head including fiber adaptor, without lens (Approx. 4.5kg / 9.9 lbs)
 - 2-inch Viewfinder (Approx. 0.7kg / 1.6 lbs)
 - CCU-790A (Approx 30.0kg / 66.1 lbs)
 - Dimensions
 - * Camera head (W125 x H270 x D337 mm) (4.9 x 8.1 x 13.3 inches)
 - * CCU (W438 x H132 x D430mm) (W3.54 x H1.06 x D7.09 inches)
 - Power consumptionApprox 28W (Camera Head including fiber adaptor)
 - Viewfinder2-inch, 5-inch, 7-inch B/W, 9-inch LCD Color (16:9 screen)
- Performance
 - Sensitivity-F10/2,000lx
 - S/N-56dB (HDTV), 64dB (SDTV)
 - Modulation depth-45% or more (800 TVL 27.5MHz)
 - Limiting resolution-1,000 TV lines (HDTV) 900 TV lines (NTSC)
 - GAIN Control-3dB, 0dB, +3dB, +6dB, +12dB (selectable)
 - Gamma-OFF, 0.35, 0.4, 0.45

Design and specifications are subject to change without notice.

H39C064-HI-K1 Printed in Japan

Ikegami

KEGAMI ELECTRONICS (U.S.A.), INC.

■ URL <http://www.ikegami.com>

HEADQUARTERS 37 BROOK AVENUE, MAYWOOD, NJ 07607
Phone:(201) 368-9171 Fax:(201) 569-1626

WESTCOAST OFFICE 2631 MANHATTAN BEACH BLVD., REDONDO BEACH, CA 90278
Phone:(310) 297-1900 Fax:(310) 536-9550

SOUTHWEST OFFICE 773 BEARDEN WAXAHACHIE, TX 75167 Phone:(972) 869-2363 Fax:(972) 556-1057

MIDWEST OFFICE 747 CHURCH ROAD, UNIT C1, ELMHURST, IL 60126 Phone:(630) 834-9774 Fax:(630) 834-8689

SOUTHEAST OFFICE 5200 N.W. 33RD AVENUE, SUITE 111 FORT LAUDERDALE, FL 33309 Phone:(954) 735-2203 Fax:(954) 735-2227

ISO 9001



Certified
JQA-0773

ISO 14001



Certified
JQA-EM3888