

TECHNICAL BULLETIN

Ikegami

37 Brook Avenue, Maywood, New Jersey 07607 • (201) 368-9171

Date: Sept. 1, 2005
Engineer: Larry Cuccio
Page: 1 of 3

To: Distribution

Product: HTM 1505R Color Monitor

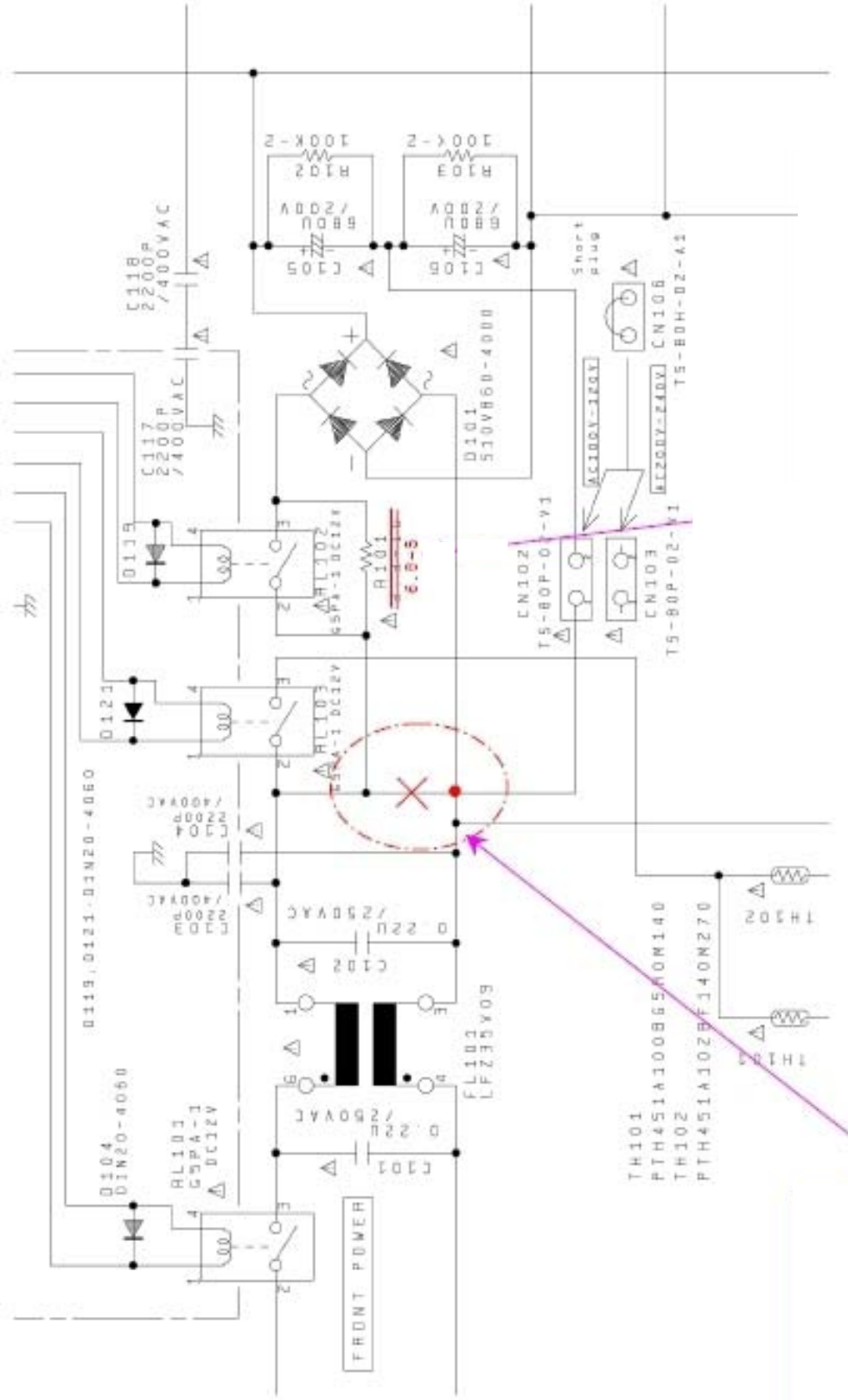
Purpose of Modification: To ensure normal operation of the front power switch with the AC input voltage set to 100V – 120V.

If the monitor is equipped with the AC input voltage selection connector CN102, when the front power switch is activated, the high inrush current may cause the switch and relay RL101 to become inoperative. As a result, the unit cannot be turned off using the front power switch.

Modification procedure for 100V – 120V system:

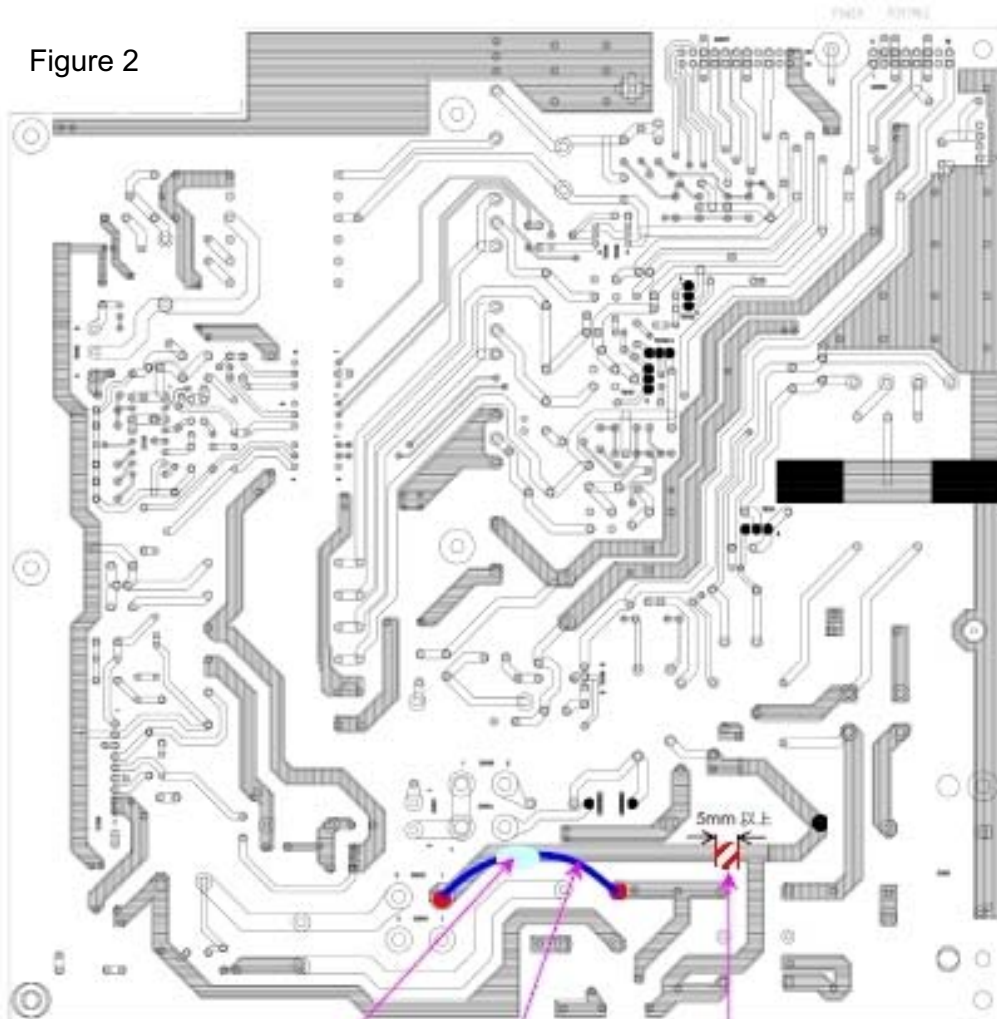
1. Refer to Schematic, Fig 1.
2. Cut the trace between the AC line HOT side and CN102 pin 1 (cut width is 5mm or more). Refer to Fig. 2.
3. Connect a wire (AWG20) between the AC line COLD side and CN102 pin 1. Use silicone rubber to hold this wire in place. Refer to Fig. 2.

Figure 1



Cut between the AC line HOT side and CN102 pin 1
Connect the AC line COLD side and CN102 pin 1

Figure 2



Jumper wire is fixed by silicone rubber

Cut between the AC line HOT side and CN102 pin 1
(Cut width is 5mm or more)

Jumper the AC line COLD side and CN102 pin 1