

# TECHNICAL BULLETIN

Ikegami

37 Brook Avenue, Maywood, New Jersey 07607 • (201) 368-9171

Date: Oct. 31, 2007  
Engineer: Larry Cuccio  
Page: 1 of 2

To: Distribution

Product: VFL-900HD Viewfinder

Symptom: No operation due to blown fuse

When the viewfinder is turned on, the surge current may be high enough to cause the fast-acting fuse, F1, to open. To correct this problem, it is recommended to change F1 to a Slo Blo type fuse.

#### Modification procedure:

1. On the back of the viewfinder, remove the connector cover, then remove the interconnect cable.
2. Remove the 5 screws holding the rear cover in place. ( 2 top, 2 bottom, 1 by the connector cover.
3. Remove the power module (4 screws). This module has a red heat sink on it. Refer to Fig. 1.
4. Remove Fuse F1, located on the component side of the power module. This component is located on the left side of the board. Refer to Fig. 2
5. Replace with a 2.5A Slo Blo fuse.
6. Reinstall the power module, rear cover, interconnect cable, and connector cover.

Note: This circuit board is Rohs compliant, therefore lead free solder must be used.

#### Replacement component:

Fuse, 2.5A Slo Blo, P/N 046002.5VR

# TECHNICAL BULLETIN

Ikegami

37 Brook Avenue, Maywood, New Jersey 07607 • (201) 368-9171

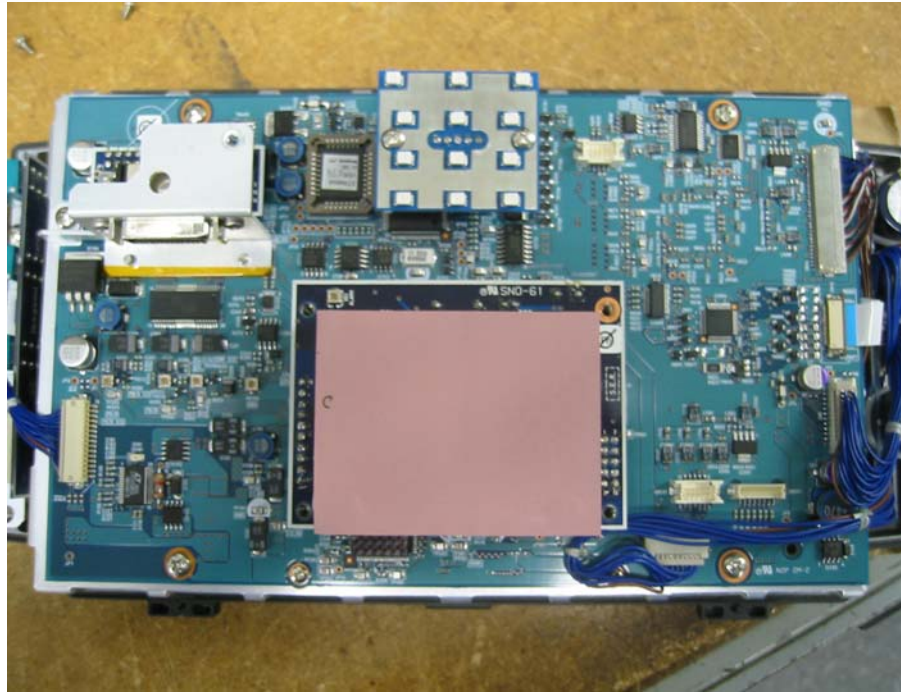
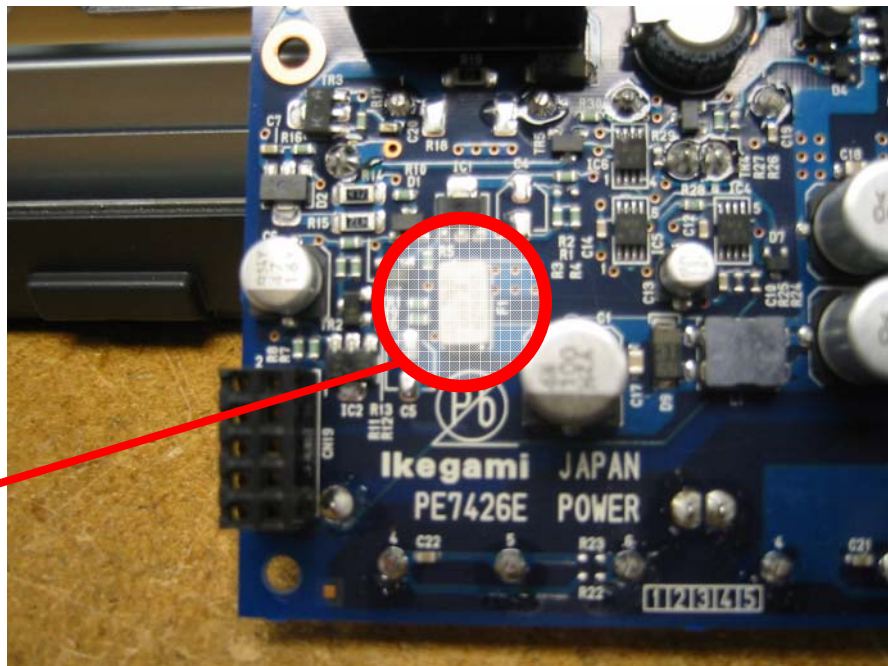


FIGURE 1



FUSE F1

FIGURE 2