

A. SDR301/304 Remote Connect Setting Method (Direct)

1) Connecting Method

SDR301/304



SDR : 192.168.1.100

For example (SDR301/304)

<u>IP</u>	IP ADDRESS :	<input type="text" value="192.168. 1.100"/>
	SUB NET MASK :	<input type="text" value="255.255.255. 0"/>
<u>CLIENT</u>	NAME :	<input type="text" value="user1"/>
	PASSWORD :	<input type="text" value="1"/>

When it is direct connection,
The LAN Cable must be **Cross Over Type**.

SDR300 Viewer (PC)



PC : 192.168.1.200

For example (PC)

<u>IP</u>	IP ADDRESS :	<input type="text" value="192.168. 1.200"/>
	SUB NET MASK :	<input type="text" value="255.255.255. 0"/>

Set the IP Address, because DHCP server is not used.

Firewall

When there is the Firewall function of "Anti Virus Soft" , "Winds XP" and "Router" etc,
Open UDP Port No. 10000 / 10001.

PC

The PC has SDR300 Viewer software installed.

2) SDR301/304 Setting Method

Setting the IP Address of the SDR301/304

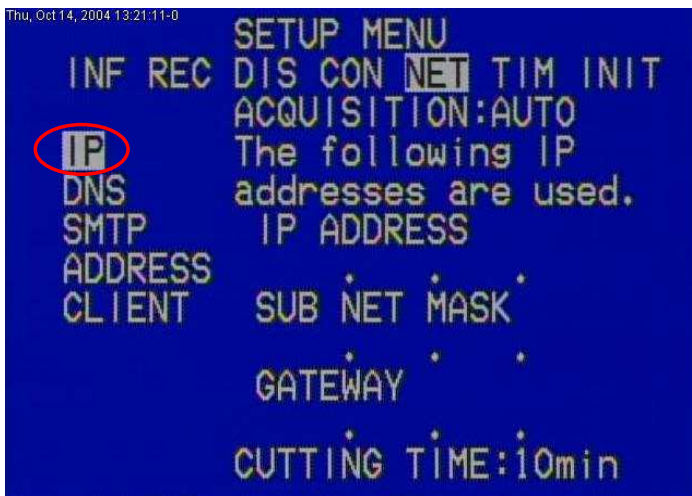
1. Press **MENU** to display the [SETUP MENU].



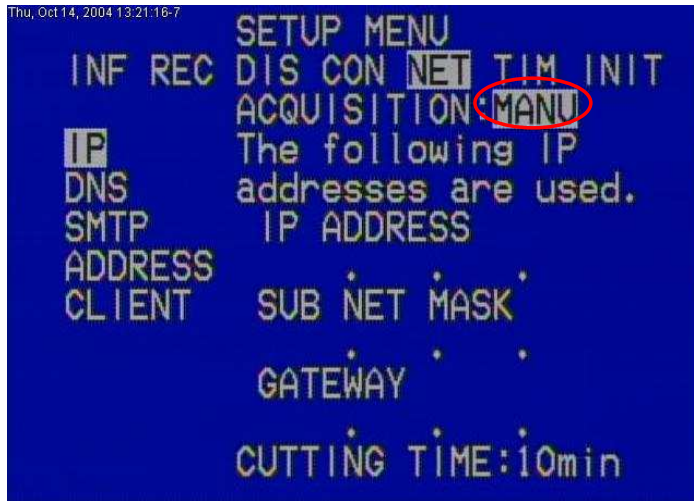
2. Move to [NET] by **>**.



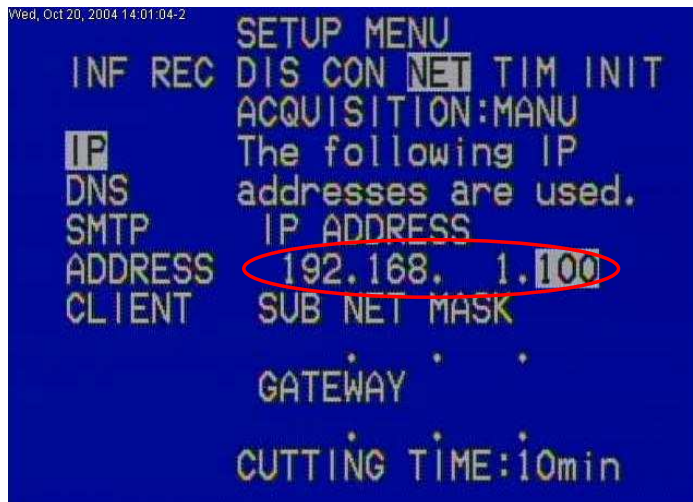
3. Press **ENTER** to display the [IP MENU].



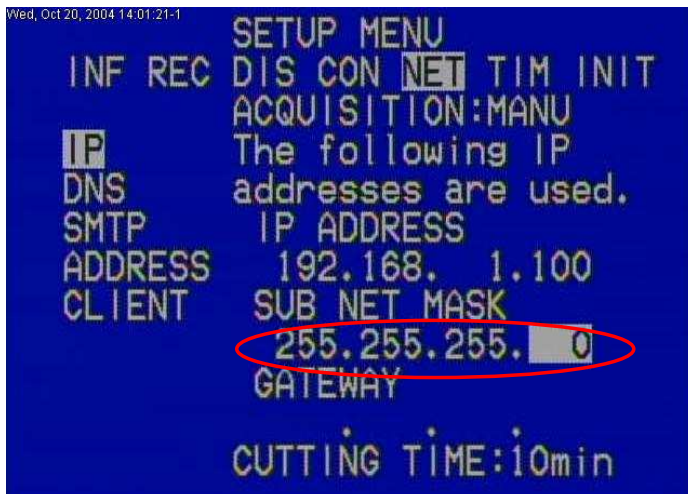
4. Press **ENTER** twice and select the [ACQUISITION : **MANU**] by **>**.



5. Press **ENTER** twice and enter the [IP ADDRESS : **192.168. 1.100**] by **>**.
(for example [IP ADDRESS : **192.168. 1.100**])



6. Press **ENTER** twice and enter the [SUB NET MASK : **255.255.255. 0**] by **>** and press **RET/CANCEL**.
(for example [SUB NET MASK : **255.255.255. 0**])



Setting the CLIENT

1. Select the [CLIENT] by .

```
Thu, Oct 14, 2004 13:22:32-0
SETUP MENU
INF REC DIS CON NET TIM INIT

IP      MOVE
DNS     ADMINISTRATOR:1
SMTP    HTTP :80
ADDRESS HTTPS:443
CLIENT  MTU  :1454
        SPEED:10  0.167sec
```

Please check "MTU:1454".
When it is not "1454",
Please enter "1454".

2. Press to select the [MOVE].

```
Thu, Oct 14, 2004 13:22:32-3
SETUP MENU
INF REC DIS CON NET TIM INIT

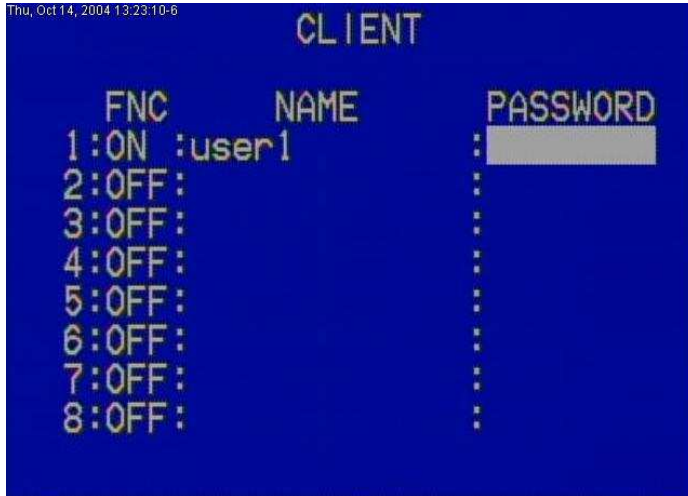
IP      MOVE
DNS     ADMINISTRATOR:1
SMTP    HTTP :80
ADDRESS HTTPS:443
CLIENT  MTU  :1454
        SPEED:10  0.167sec
```

3. Press to display the [CLIENT MENU].

```
Thu, Oct 14, 2004 13:22:33-1
CLIENT

FNC      NAME      PASSWORD
1:OFF:   :
2:OFF:   :
3:OFF:   :
4:OFF:   :
5:OFF:   :
6:OFF:   :
7:OFF:   :
8:OFF:   :
```

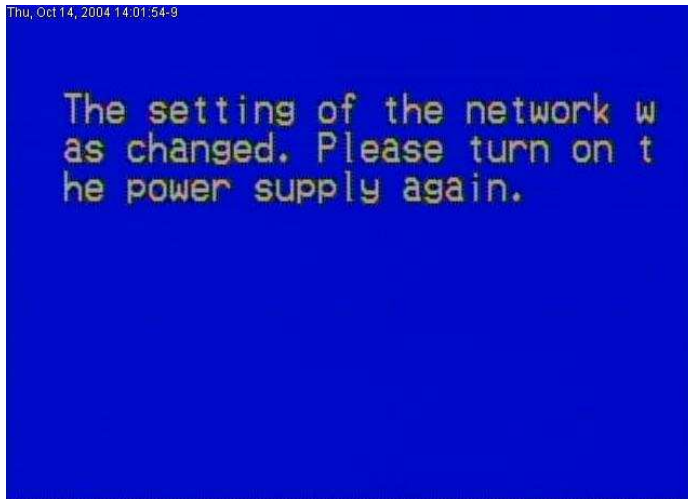

7. Press **RET/CANCEL** and select the **[PASSWORD]** by **>**.



8. Press **ENTER** to display the **[CLIENT NAME]** and enter the **[PASSWORD : 1]** by **ENTER&>**.
(for example **[PASSWORD : 1]**)



9. Press **NEMU** to finish the [SETUP NEMU] and turn on the power supply again by the **Main power switch** on the back.

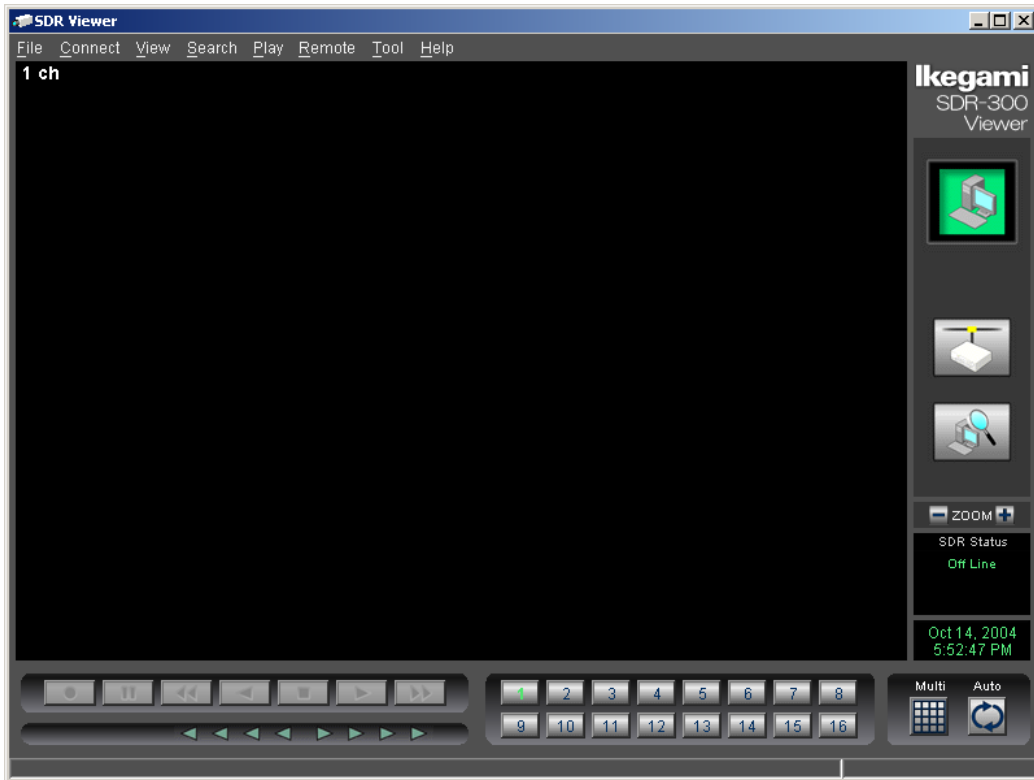


Please make sure you read the operation manual prior to use in order to ensure you gain a sufficient understanding of the SDR301/304.

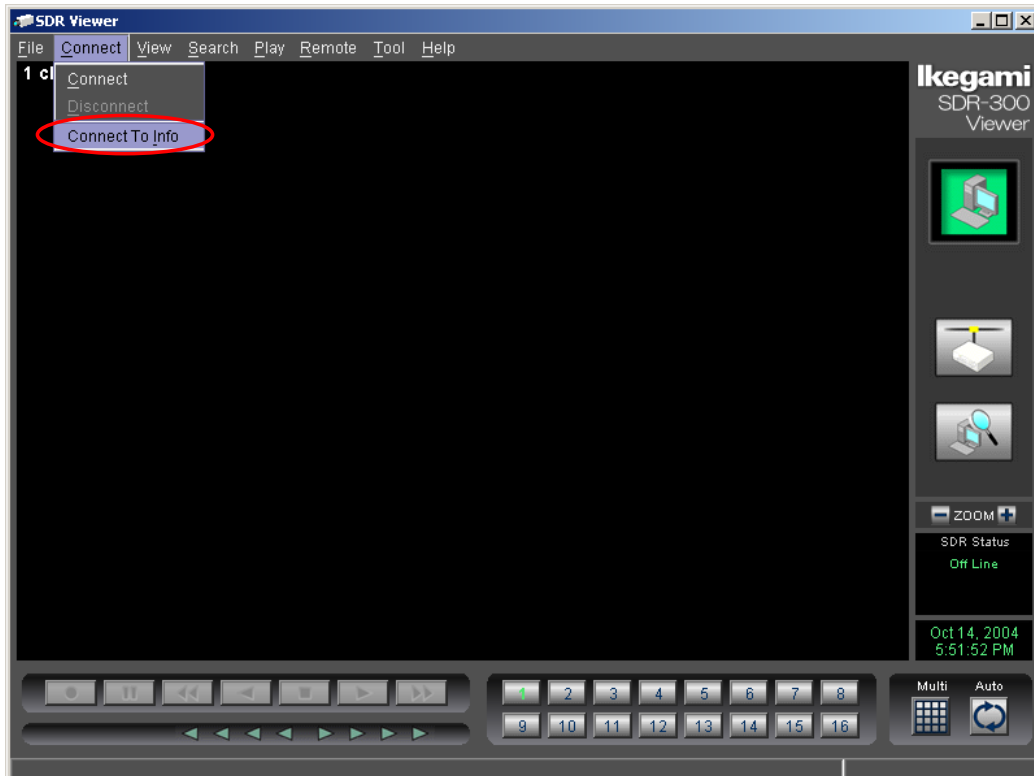
3) SDR300 Viewer (PC) Setting Method

Setting the Host and User

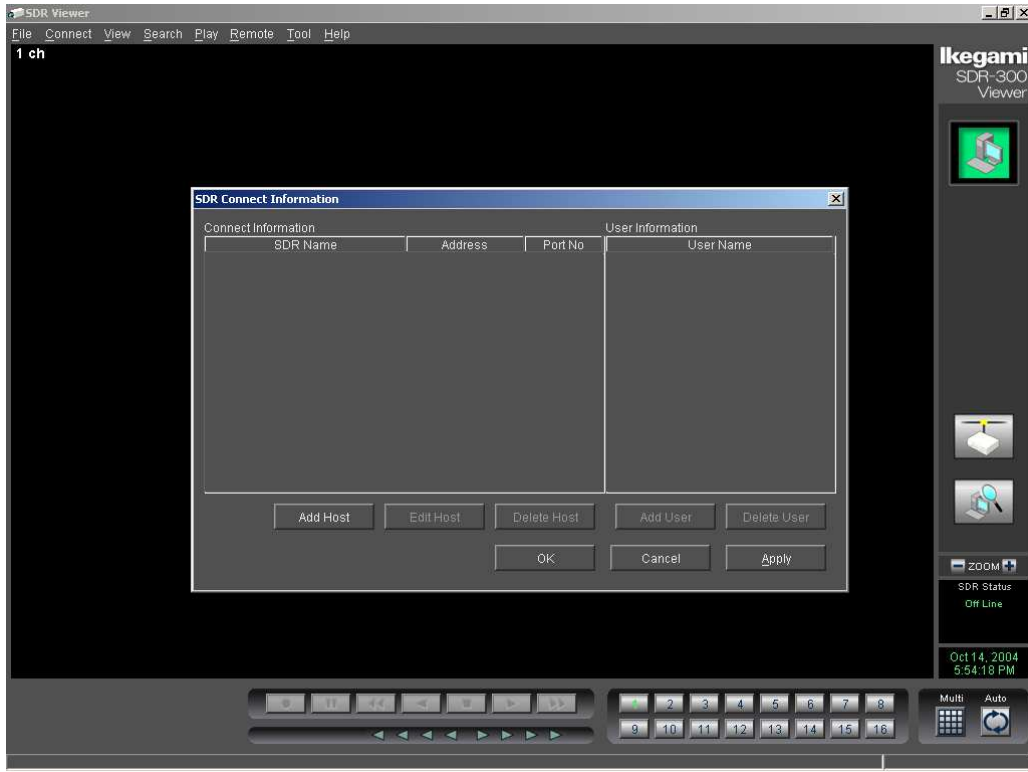
1.Start the [SDR-300 Viewer] of the PC.



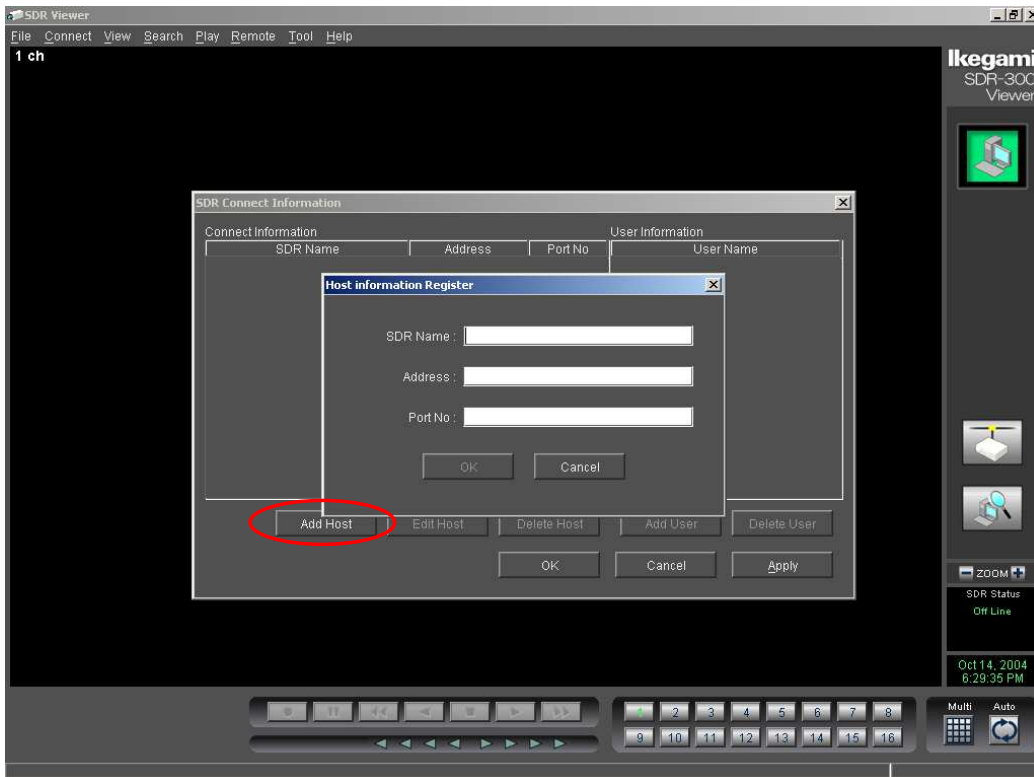
2.Click **Connect** and select **Connect To Info** from task bar.



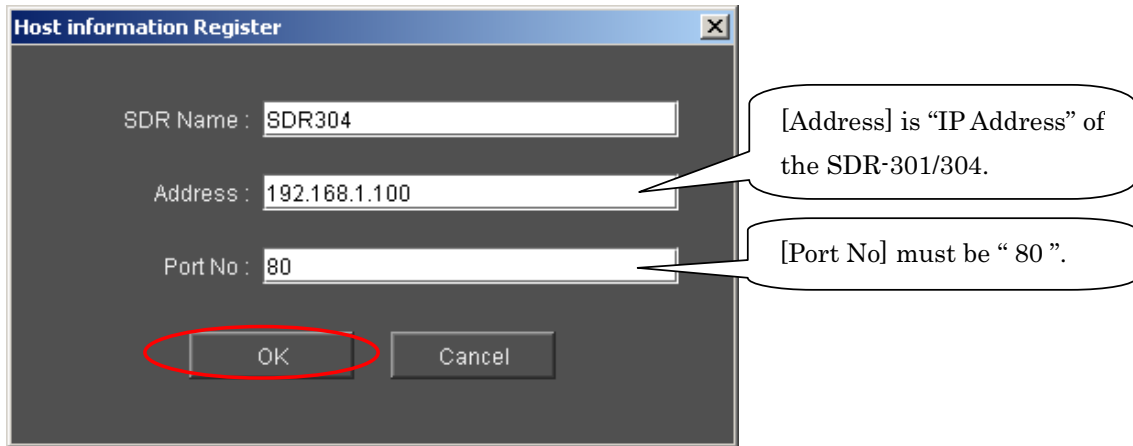
3. Display the [SDR Connect Information].



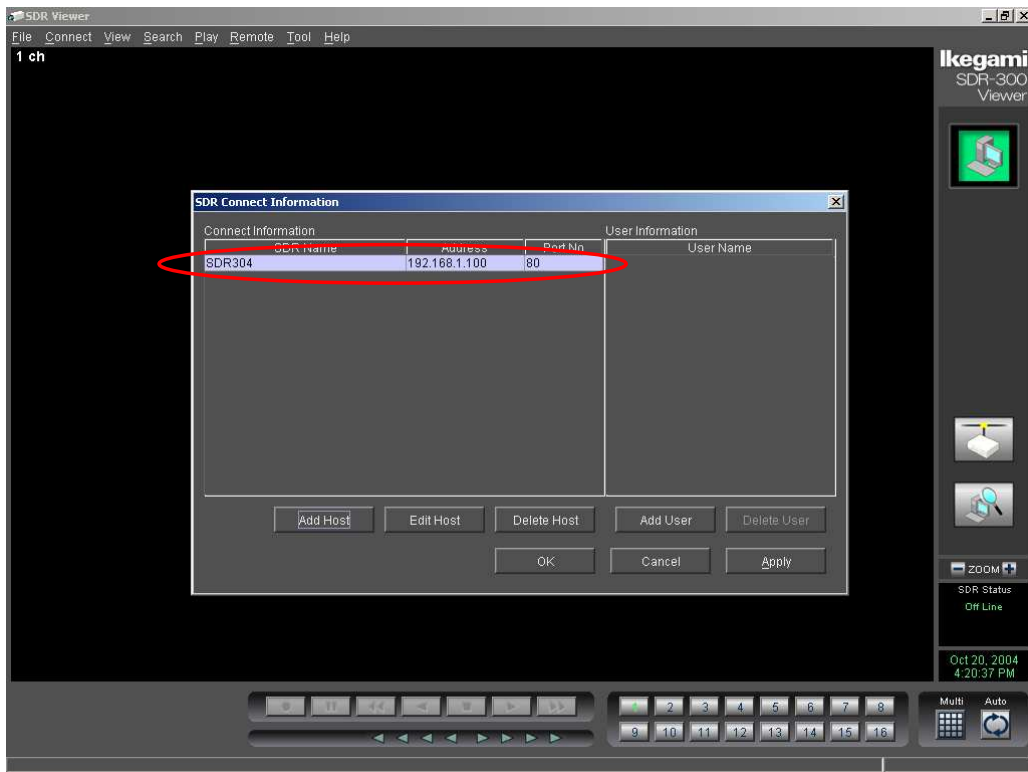
4. Click **Add Host** to display the [Host information Registration].



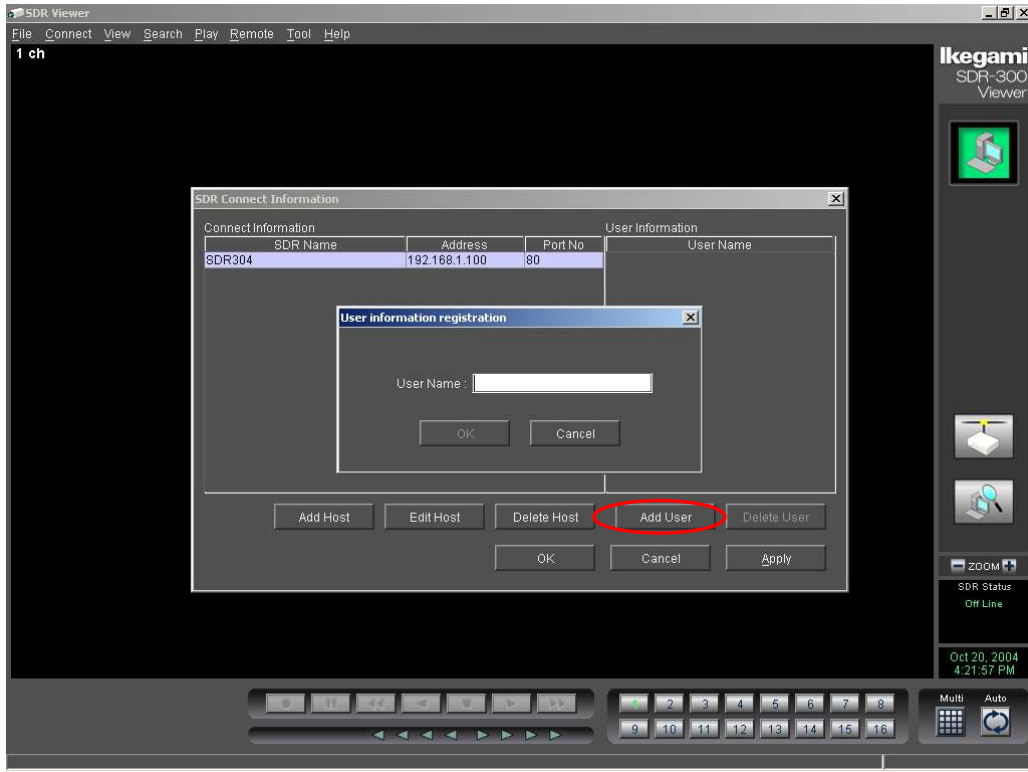
5. Enter the [SDR Name : **SDR304**] , [Address : **192.168.1.100**] and [Port No : **80**] and click **OK**.
(for example the [SDR Name : **SDR304**])



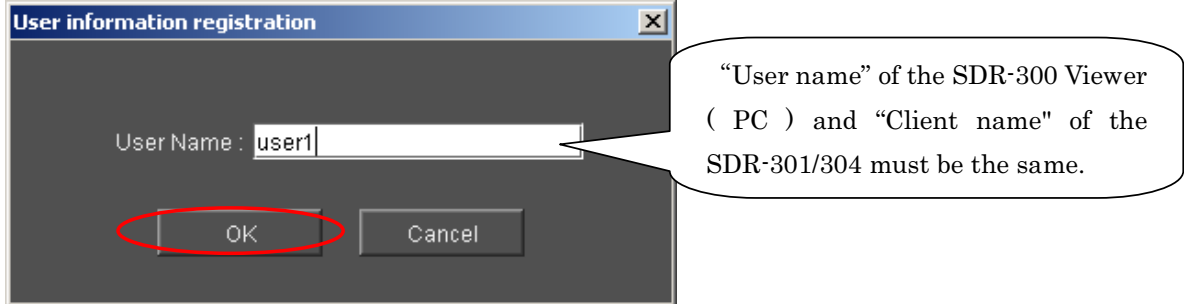
6. Display the [SDR Connect Information] and check the [SDR Name] , [Address] and [Port No].



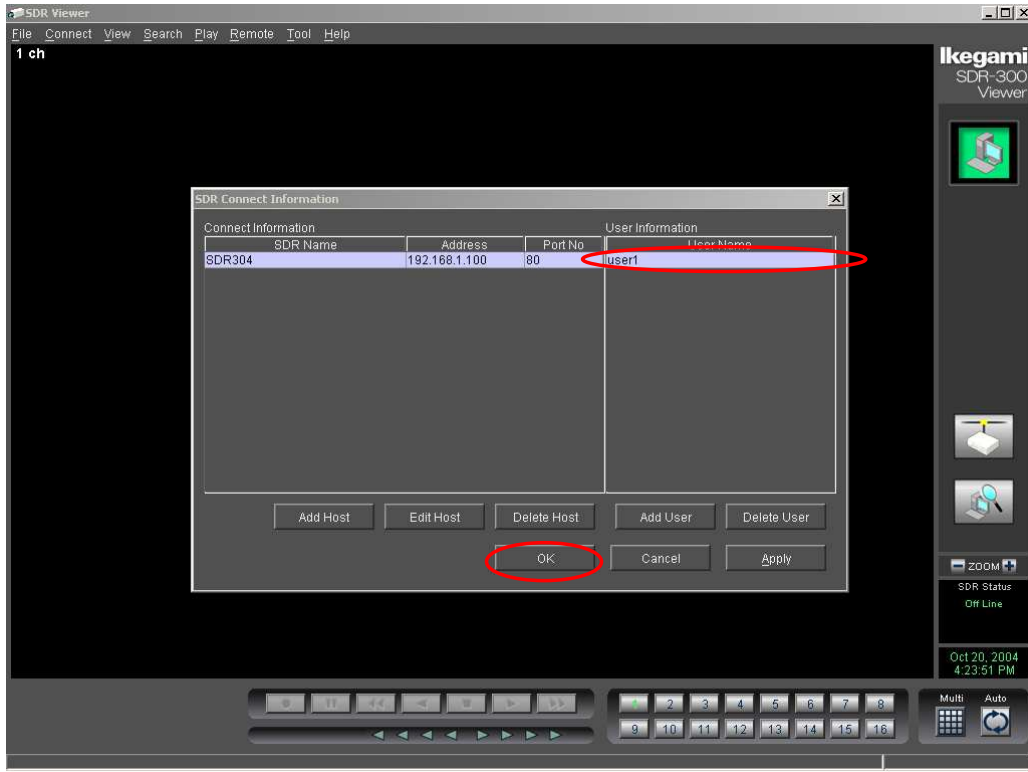
7. Click **Add User** to display the [User information Registration].



8. Enter the [User Name : **user1**] and click **OK**.

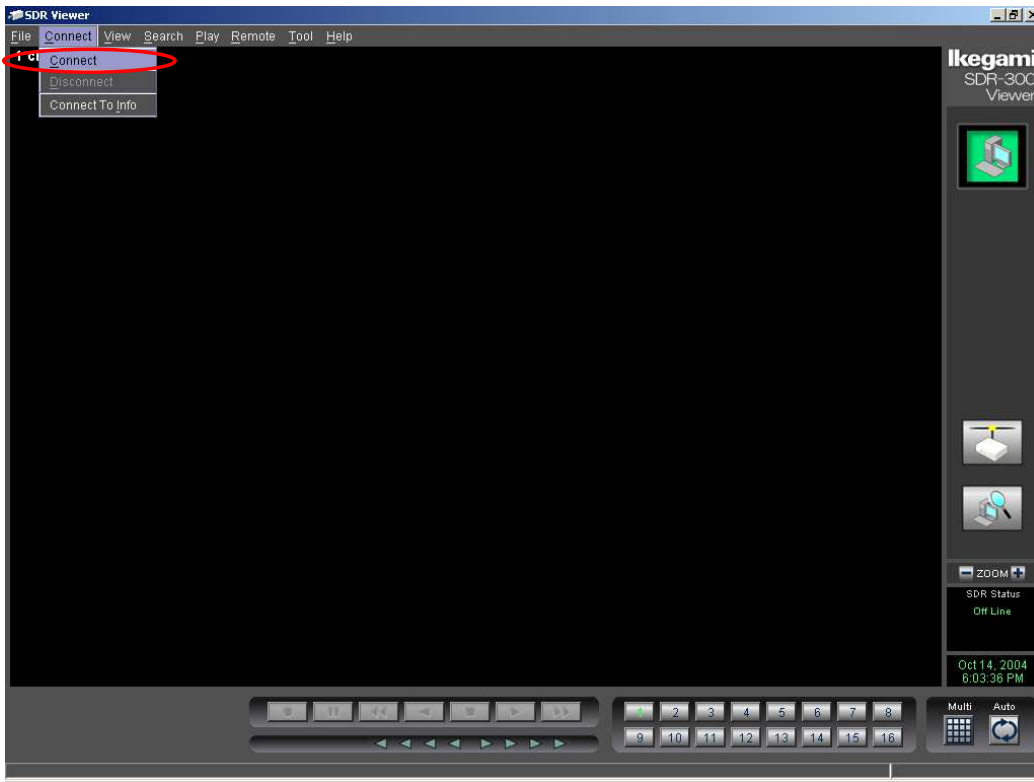


9. Display the [SDR Connect Information] and check the [User Name] and click **OK**.

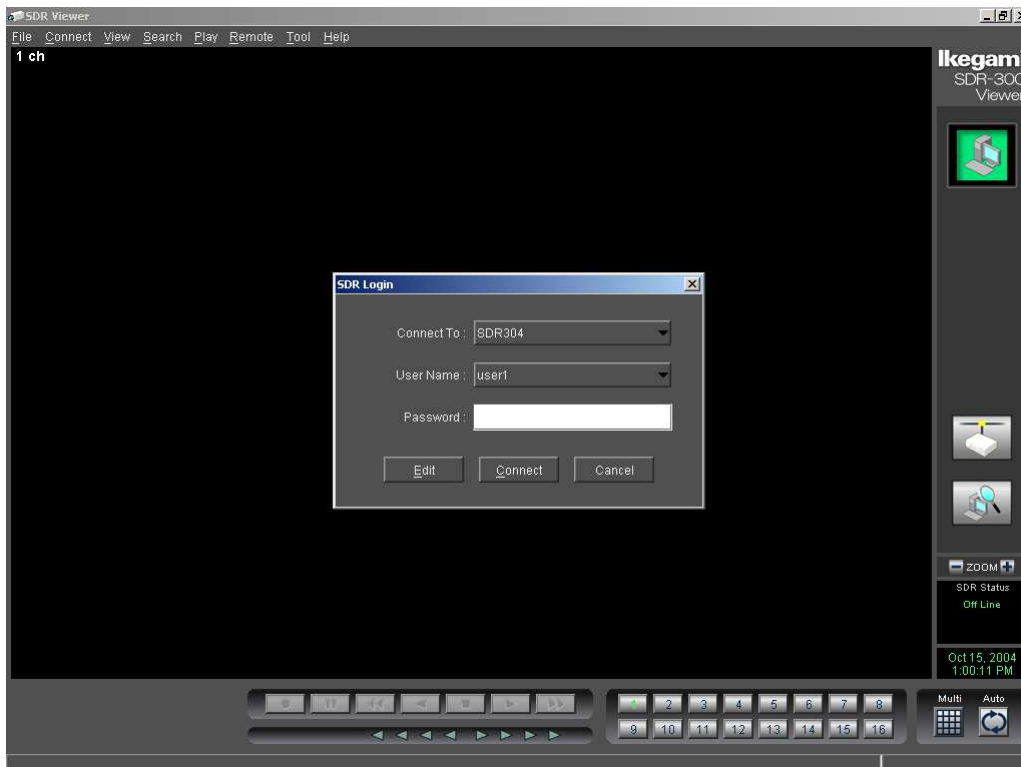


Connecting

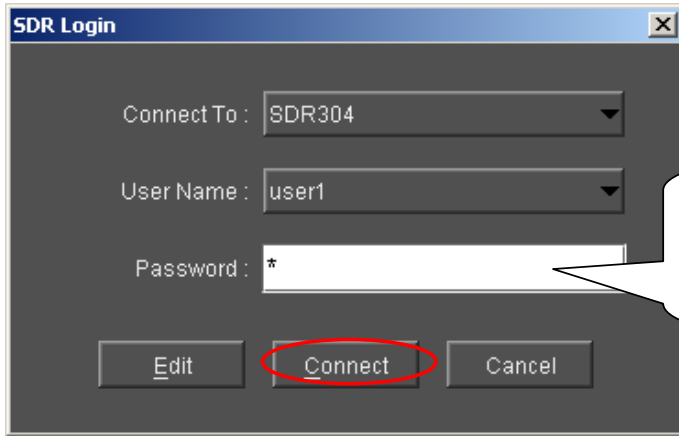
1. Click **Connect** and select **Connect** from task bar.



2. Display the [SDR login].

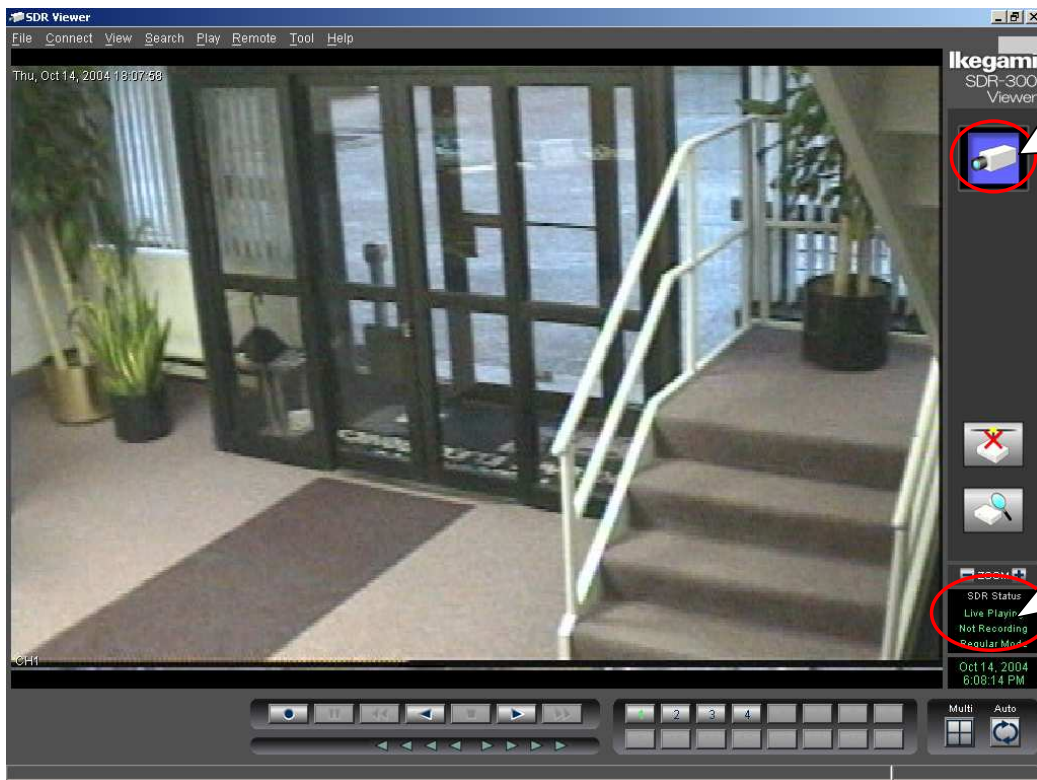


3. Select the [Connect To : **SDR304**], [User Name : **User1**], enter the [Password : **1**] and click **Connect**.



“ Password” of the SDR-300 Viewer (PC) and “Client Password” of the SDR-301/304 must be the same.

4. Connect PC and SDR301/304.



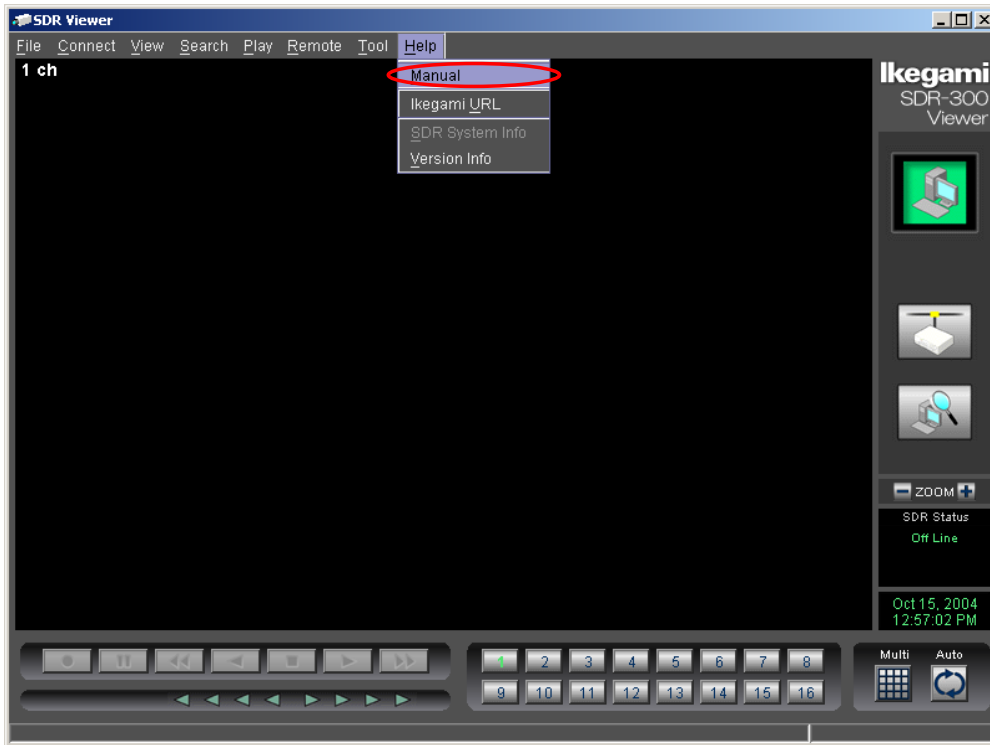
Status of live images transmitted from the SDR.

Displays the SDR Equipment Status.

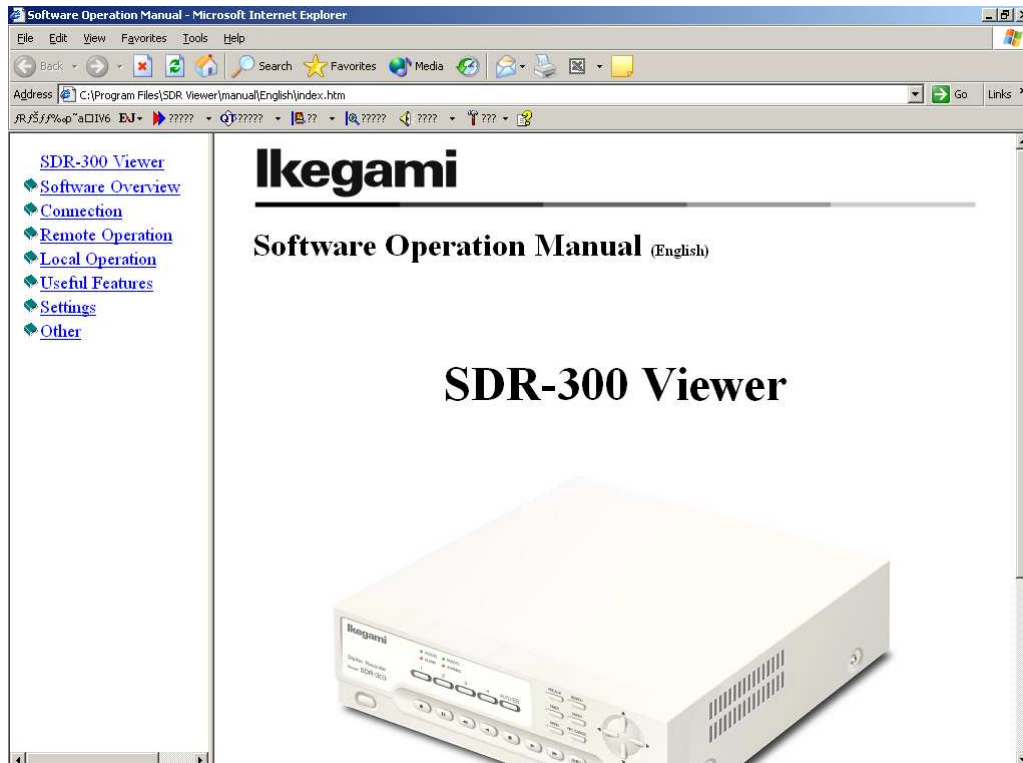
Please make sure you read the operation manual prior to use in order to ensure you gain a sufficient understanding of this application (the SDR-300 Viewer).

SDR300 Viewer Manual

1. Click **Help** and select **Manual** from task bar.



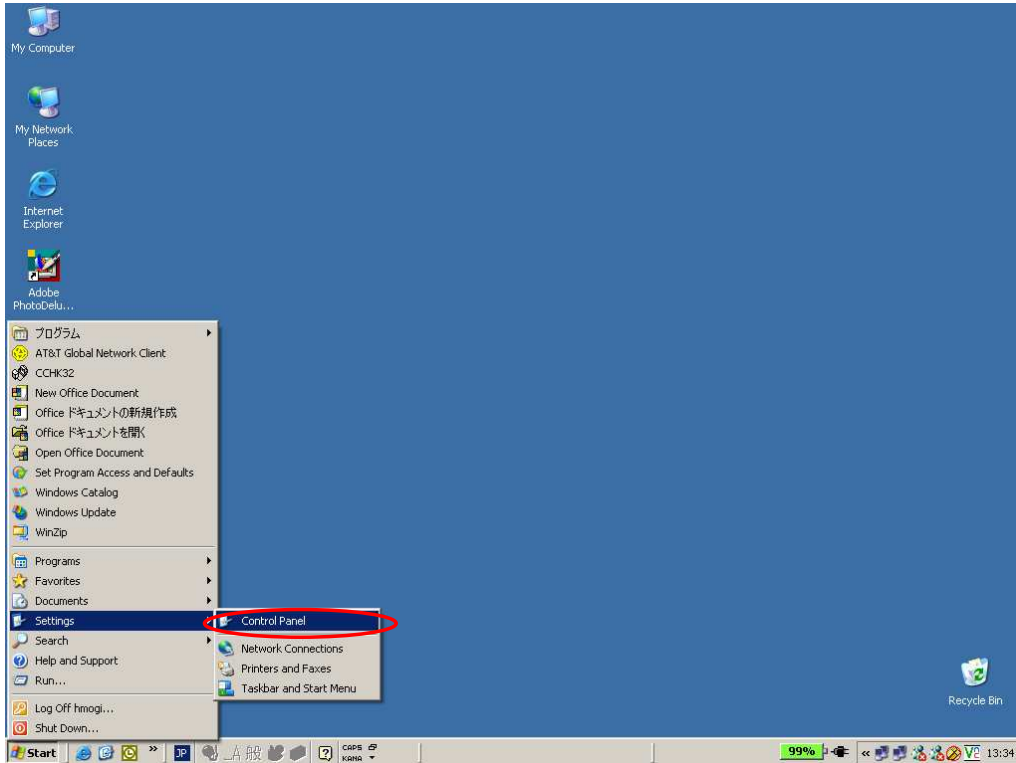
2. Display the [SDR300 Viewer Manual].



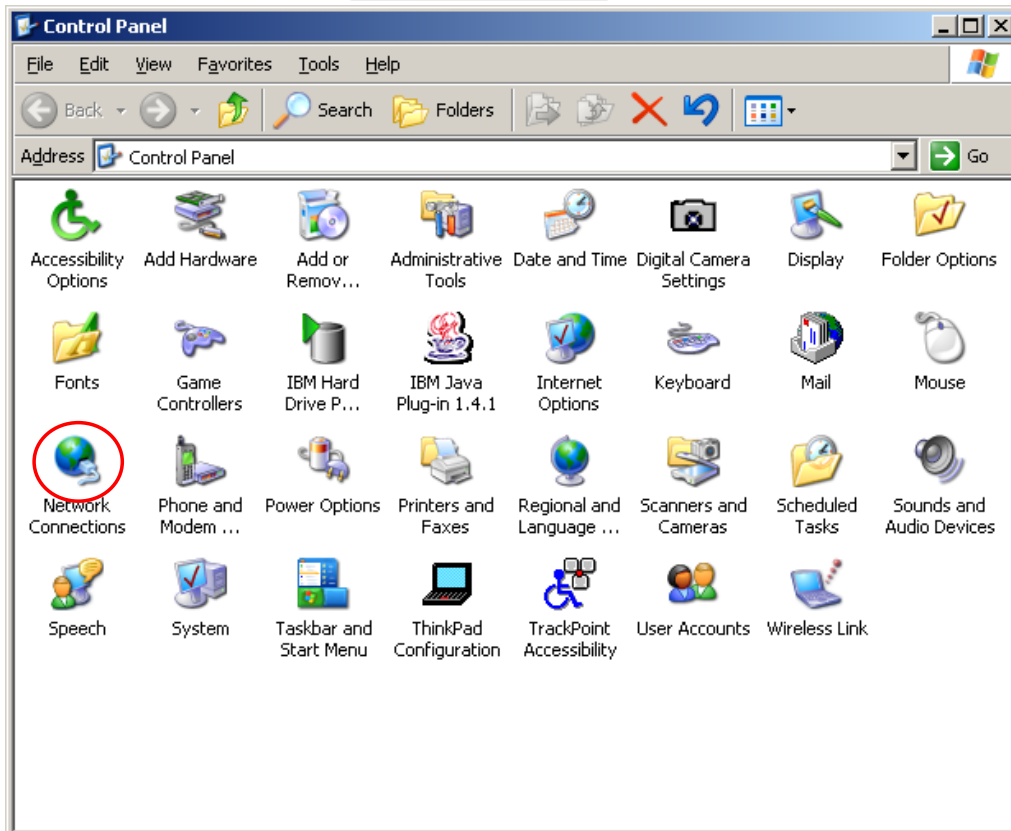
4) PC Setting Method

Setting the IP Address of the PC

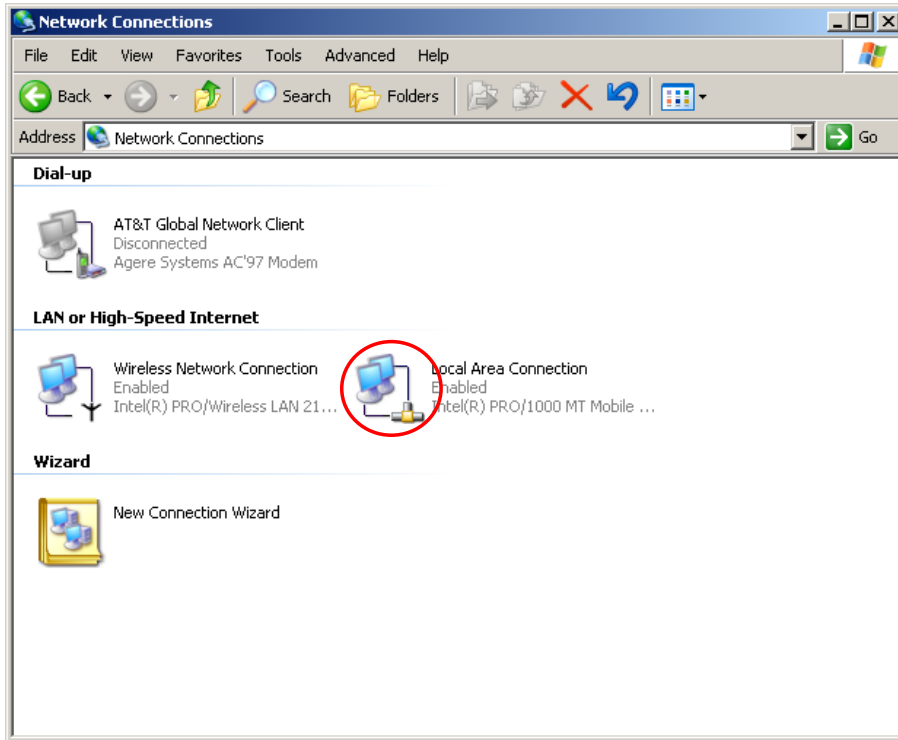
1. Click **Start** and select **Setting** and **Control Panel** from task bar.



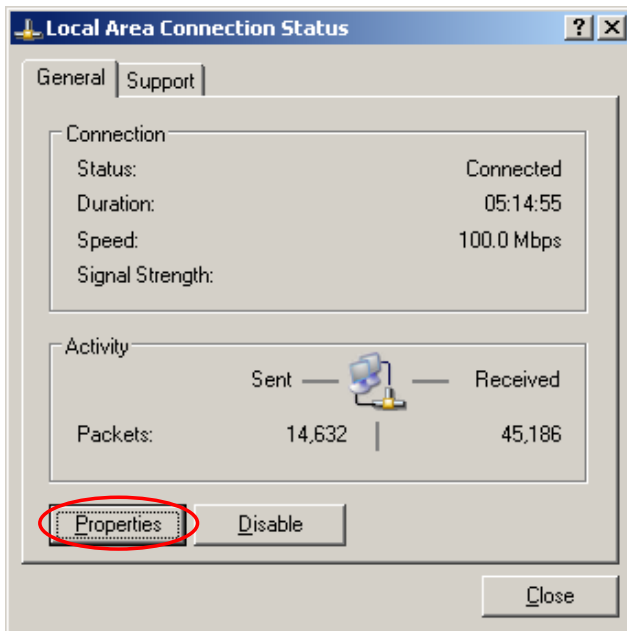
2. Display the **Control Panel** and click **Network Connections**.



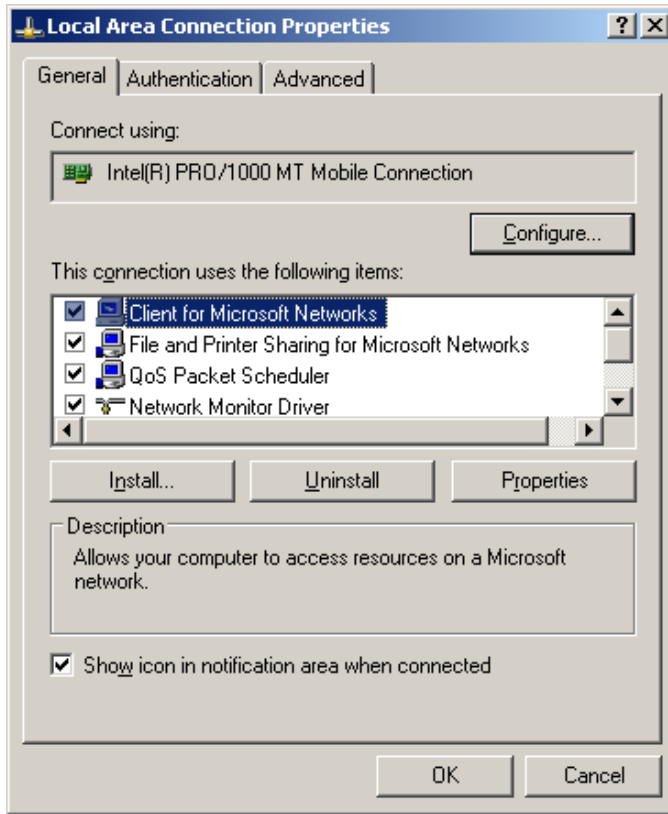
3. Display the [Network Connections] and click [Local Area Connection].



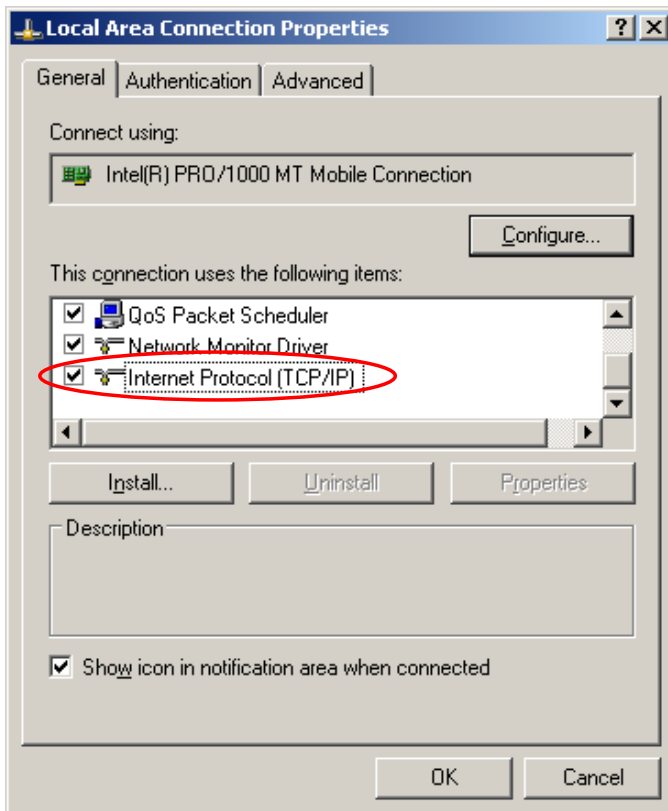
4. Display the [Local Area Connection] and click [Properties].



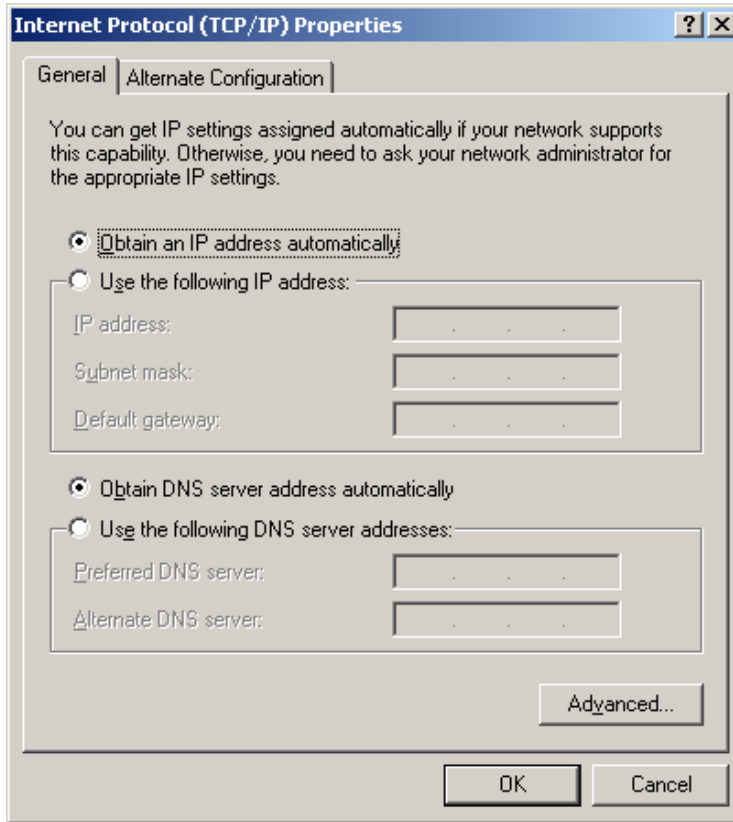
5. Display the [Local Area Connection Properties].



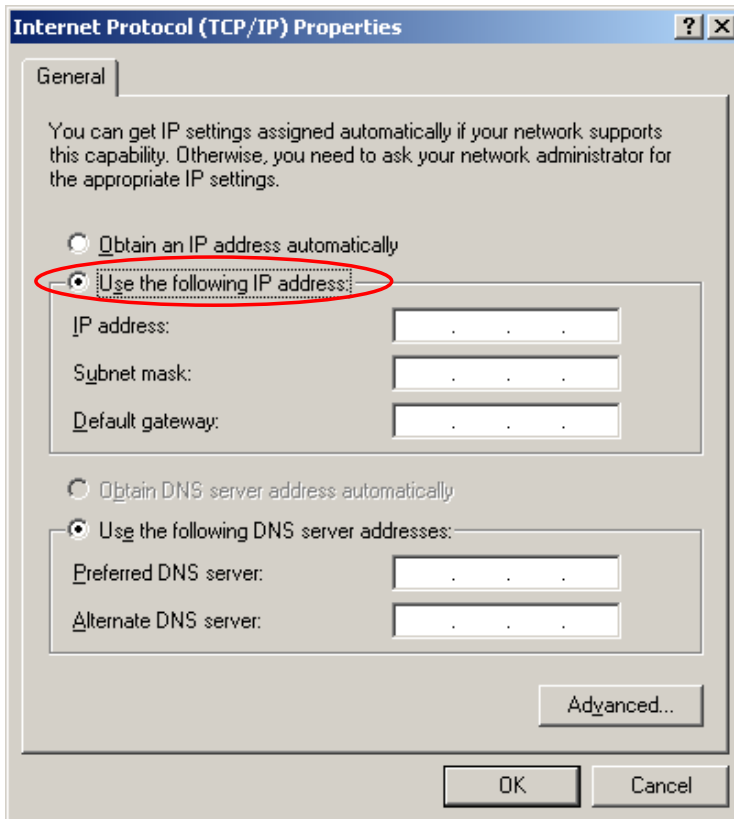
6. Select Internet Protocol(TCP/IP) and Double click Internet Protocol(TCP/IP).



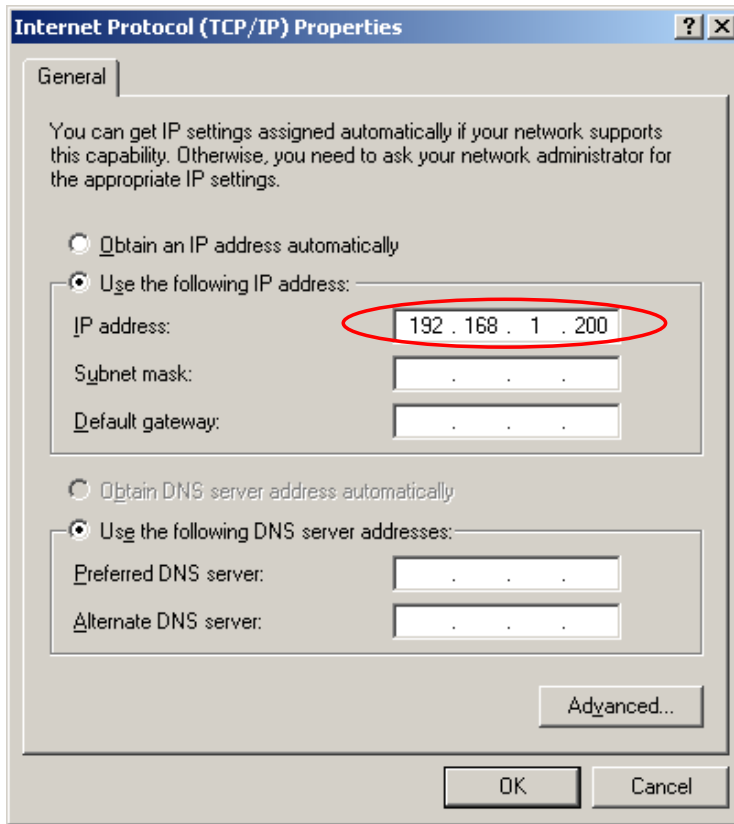
7. Display the [Internet Protocol(TCP/IP) Properties].



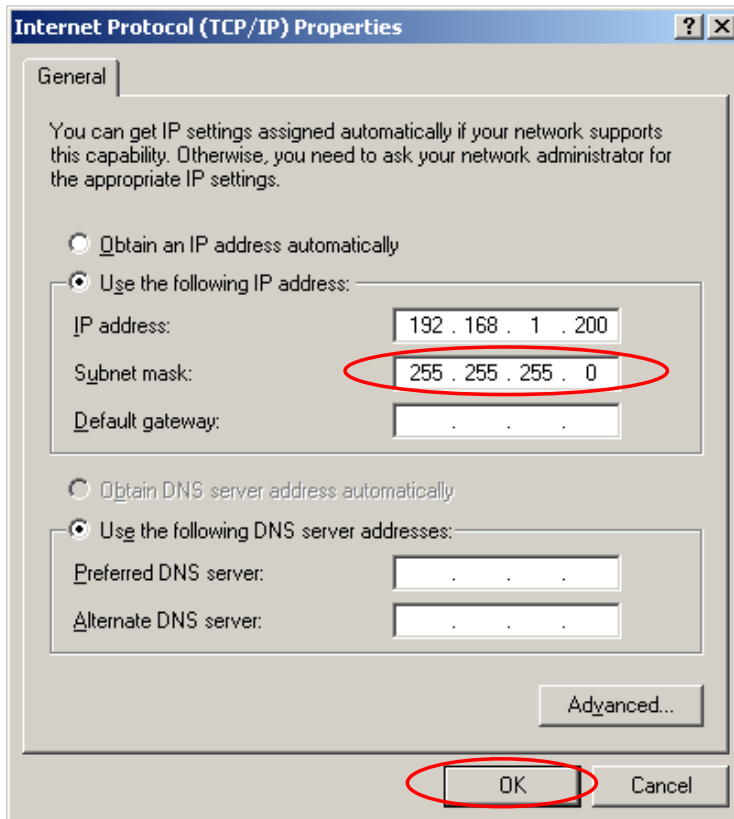
8. Select Use the following IP address.



9. Enter the [IP address : **192.168.1.200**].



10. Enter the [Subnet mask : **255.255.255.0**] and click **OK**.



When you end connection with SDR, please return to the original setup of the PC.