

ECO SERIES

EE-IPB8MP-2

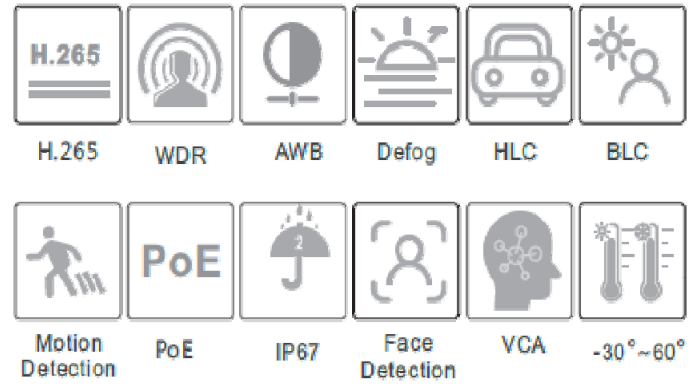
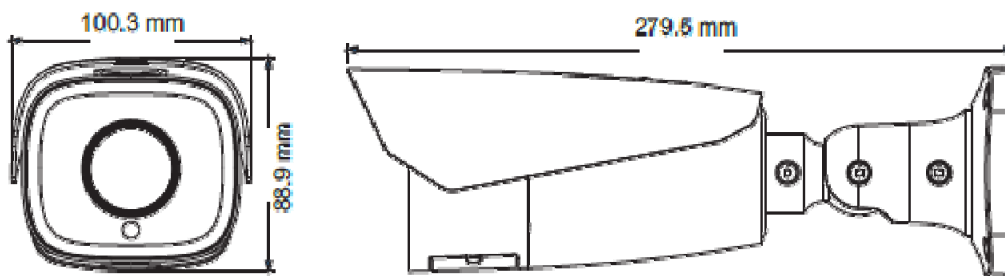
8MP HD AI Motorized Bullet Network Camera

Page 1 of 2

Features:

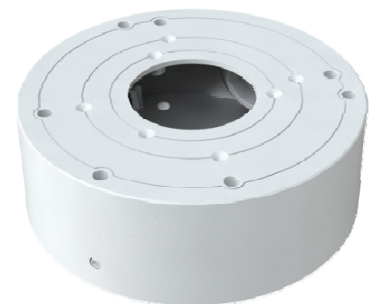
- ❖ Smart H.265/H.264 coding
- ❖ Max. resolution: 8MP (3840 × 2160)
- ❖ ICR auto switch, true day / night vision
- ❖ 3D DNR, true WDR, HLC, BLC and ROI coding
- ❖ 50~70m IR night view distance; Motorized zoom lens
- ❖ 1CH audio input; 1CH audio output; 1CH CVBS video output
- ❖ 1CH alarm input; 1CH alarm output
- ❖ Built-in micro SD card slot, up to 128GB
- ❖ DC12V/PoE power supply
- ❖ Support three streams
- ❖ P2P function optional
- ❖ IP 67
- ❖ Support mobile surveillance by smart phones with iOS and Android OS
- ❖ Intelligent analytics

Dimensions:



Option:

EE-B11W Base Box



Design subject to change without notice.



ECO SERIES

EE-IPB8MP-2

8MP HD AI Motorized Bullet Network Camera

Specifications:

Camera	
Image Sensor	1 / 2.8 "CMOS
Image Size	3840x2160
Electronic Shutter	1 / 25 s ~ 1 / 100000 s
Iris Type	DC Iris
Min. Illumination	0.01 lux @ F1.2, AGC ON; 0 lux with IR 0.015 lux @ F1.4, AGC ON; 0 lux with IR
Lens	2.8~12mm@F1.4, motorized
Field of View	Horizontal: 96°~32°; Vertical: 64°~18.4°; Diagonal: 103.8°~36.5°
Lens Mount	Ø14
Wide Dynamic Range	120dB
BLC	Yes
HLC	Yes
Defog	Yes
Digital NR	3D DNR
Angle Adjustment	Pan: 0°~360°; Tilt: 0°~90°; Rotation: 0°~360°
Image	
Video Compression	Smart H.265 / H.265+ / H.265 / Smart H.264 / H.264+ / H.264 / MJPEG
H.264 Compression Standard	Baseline Profile/Main Profile/High Profile
Resolution	8MP (3840 × 2160), 6MP(3072 × 2048), 5MP(2592 × 1944) 4MP(2592 × 1520), 2K (2560 × 1440), 3MP (2304 × 1296), 1080P (1920 × 1080), 720P (1280 × 720), D1, CIF, 480 × 240
Main Stream	60Hz : 8MP/6MP(1~20fps), 5MP/4MP/2K/3MP/1080P/720P(1~30fps) 50Hz : 8MP/6MP(1~20fps), 5MP/4MP/2K/3MP/1080P/720P(1~25fps) HFR Mode: 1080P/720P(60Hz: 1~60fps; 50Hz: 1~50fps)
Sub Stream	720P/D1/CIF/480 × 240 (60Hz: 1~30fps; 50Hz: 1~25fps)
Third Stream	D1/CIF/480 × 240 (60Hz: 1~30fps; 50Hz: 1~25fps)
Bit Rate	64 Kbps ~ 12 Mbps
Bit Rate Type	VBR / CBR
Audio Compression	G711A / U
Image Settings	ROI, Saturation, Brightness, Chroma, Contrast, Wide Dynamic, Sharpen, NR, etc. adjustable through client software or web browser
ROI	Each ROI to be configured separately

Interfaces	
Network	RJ45
Video Output	CVBS output (BNCx1)
Audio	1CH audio input; 1CH audio output
Alarm	1CH alarm input; 1CH alarm output
Storage	Built-in micro SD card slot; up to 128GB
Reset	Yes
Functions	
Remote Monitoring	Web browsing, CMS remote control
Online Connection	Support simultaneous monitoring for up to 10 users; Support multi-stream real time transmission
Network Protocol	UDP, IPv4, IPv6, DHCP, NTP, RTSP, PPPoE, DDNS, SMTP, FTP, SNMP, 802.1x, UPnP, HTTPs, QoS
Interface Protocol	ONVIF
Storage	Network remote storage; micro SD card storage
Smart Alarm	Motion detection; sensor alarm, SD card error; SD card full, IP address conflict, cable disconnection
Intelligent Analytics	Object abandoned/missing detection, region entrance/exiting/intrusion detection(human/vehicle classification), line crossing detection(human/ vehicle classification), video tampering detection, scene change detection, face detection, face capture, crowd density detection, heat map, human/vehicle counting, human tracking
General function	Watermark, IP address filtering, video mask, heartbeat, password protection, image distortion correction, etc.
IR Distance	50~70m
Protection Grade	IP 67
PoE	Yes (IEEE802.3af)
Others	
Power Supply	DC12V/PoE
Power Consumption	< 12W
Operating Environment	- 30 °C ~ 60 °C (-22°F~140°F) Humidity: less than 95 % (non-condensing)
Dimensions (mm)	279.5 × 100.3 × 88.9
Weight (net)	Approx. 1.04KG
Installation	Ceiling mounting; Wall mounting

Design subject to change without notice.

300 E Route 17S, Mahwah, NJ 07430 (201)-368-9171 , cctv@ikegami.com