

TECHNICAL BULLETIN

Ikegami

37 Brook Avenue, Maywood, New Jersey 07607 • (201) 368-9171

Date: 8/19/09
Engineer: Larry Cuccio
Page: 1 of 4

To: Distribution

Product: HDK-79EC / FA-79A

Symptom: No Audio (MIC) at the base station outputs when the camera is set to operate on single mode fiber, instead of SMPTE fiber camera cable, and with the camera powered by DC input from a battery pack, or DC power supply.

Purpose of Modification: To have Audio (MIC) at the base station output when using single mode fiber, and local DC power at the camera.

Modification Procedure:

1. Remove the FA Aux Module from the FA-79A Adapter. Refer to fig. 1 for module location and removal.
2. Remove Transistor TR304. Refer to Figs. 2 – 3 for part location and schematic.

Note: If the PC board is blue, lead free solder MUST be used. If it is green, then lead solder can be used.

(5) E/O&O/E, FA POWER, S/P&D/A, P/S&AUD and FA AUX module of Fiber Camera Adaptor

E/O & O/E module, FA POWER module, S/P & D/A module, P/S & AUD module and FA AUX module are located inside the left side of the fiber camera adaptor.

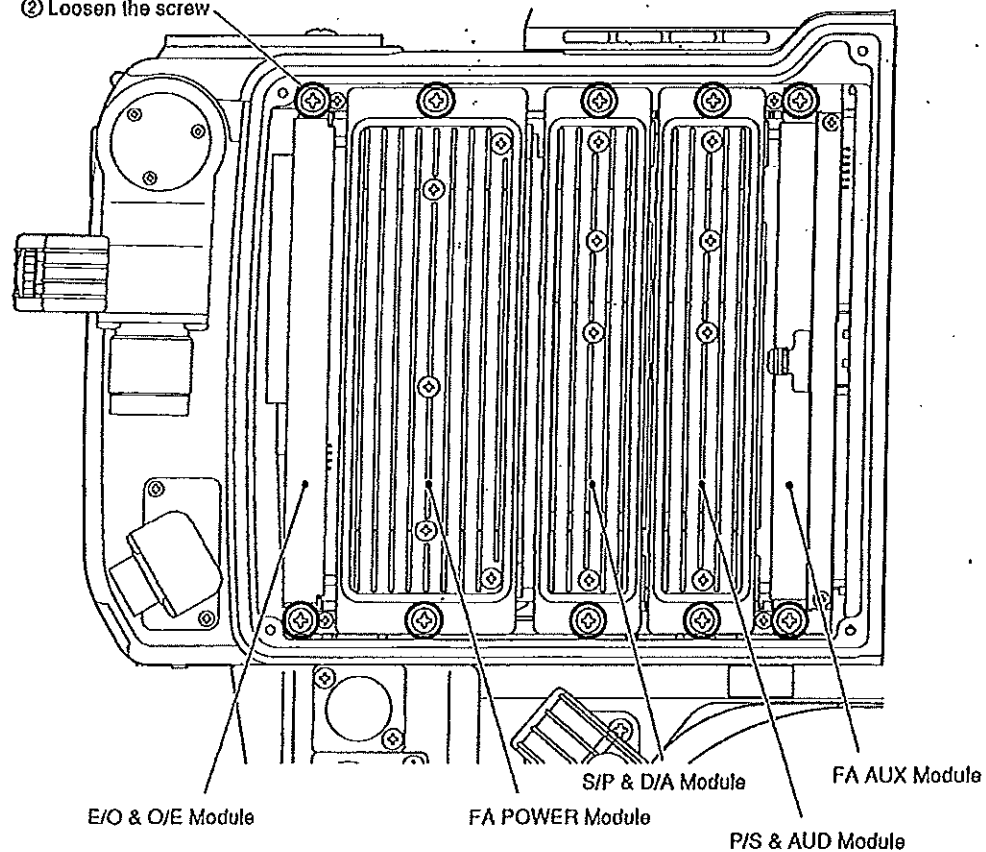
■ Module Removal

1. Loosen the four left side cover screws, located on the left side of the fiber camera adaptor, using a flat-blade screwdriver, and remove the left side cover.
2. Loosen the two screws, located on the front of the modules, using a crossed screwdriver, and pull the modules gently along the rails in the horizontal direction to remove it.
3. The optical cables or the coaxial cables are connected to E/O & O/E module, S/P & D/A module and P/S & AUD module, all those cables are disconnected.

module	optical cable	coaxial cable	multi cable
E/O & O/E	2	2	1
E/O & O/E (HS type)	2	3	1
S/P & D/A		1	
P/S & AUD		2	
P/S & AUD (HS type)		4	

Module Location

⊙ Loosen the screw



Inside the left side of Fiber Camera Adaptor

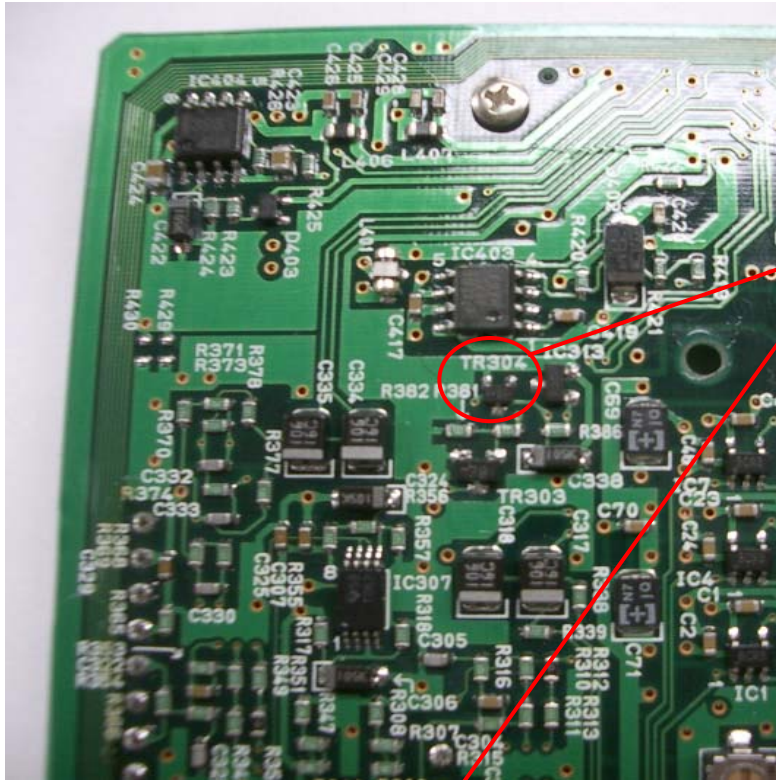
Fig. 1

■ Module Installation

Reverse the procedure to install the removed module back.

To remount the each module, gently push it in along the rails after all those cables (the optical cables or the coaxial cables) are connected. Each coaxial cable is marked to distinguish its colors and optical cables have their own numbers (1 and 2).

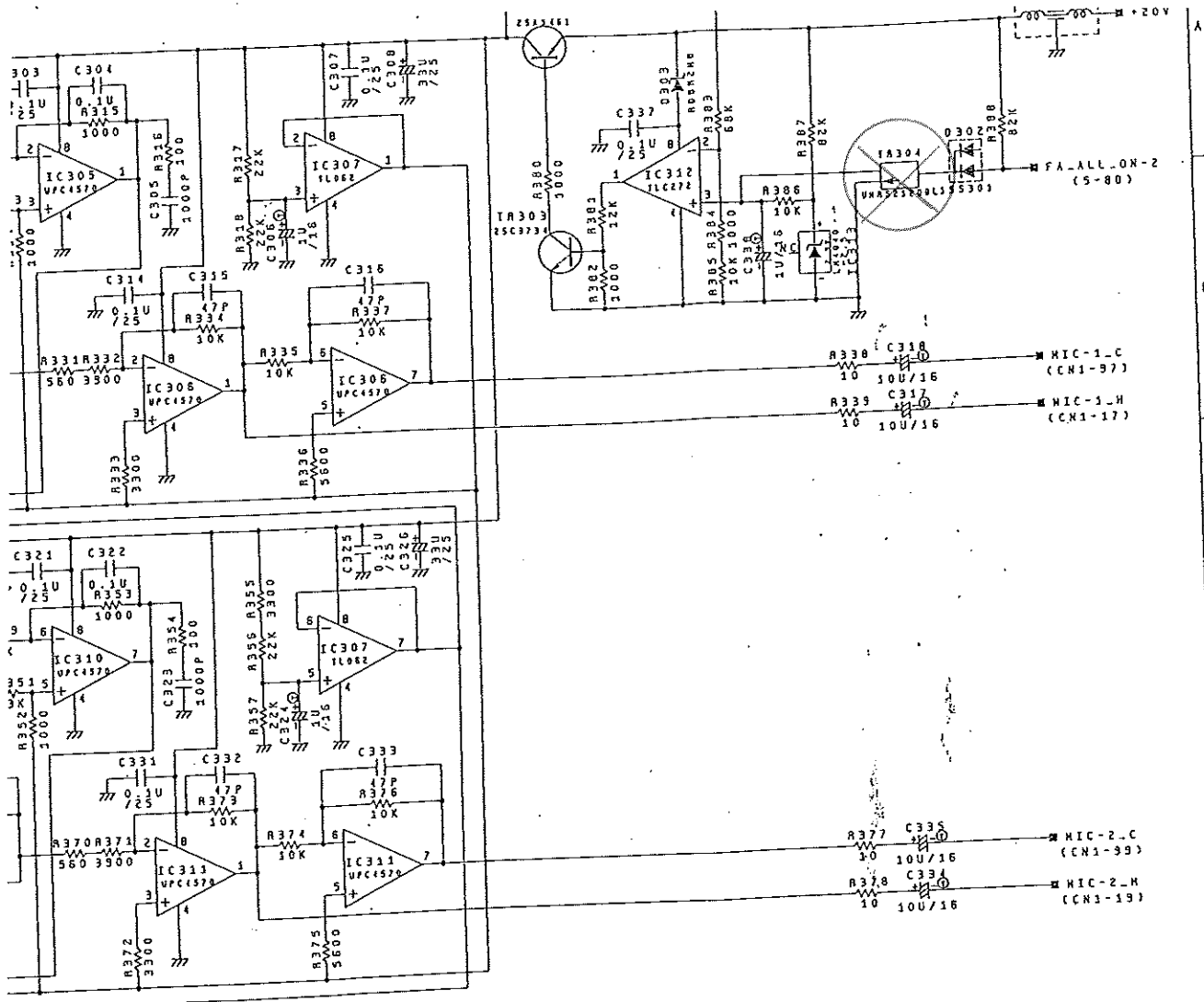
Connect each cable to a connector which has same mark or number.



Location of TR304



FIG. 2

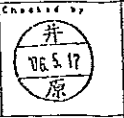


- USED No.
 C301 - 338
 O301 - 303
 IC301 - 313
 L301
 R301 - 388
 S201
 TR301 - 304
 VR301 - 302

Ikegami

E-NAME:
 P-LIST:
 PCB-NO.:

[NOTE]
 P : 10-12 H : 10-3
 N : 10-3 K : 10-3
 U : 10-5 MEC : 10-6



Drawn by
 T. KUROKAWA 2004.03.23
 Designed by
 T. KUROKAWA 2004.03.23

FA-79X
 FIBER ADAPTOR

TITLE
 FA AUX
 SCHEMATIC (4/5) F

WORK No. DEC. No. REV.
 C3-245109 1

FIG. 3