

IKEGAMI TECHNICAL

# BULLETIN

---

37 Brook Avenue, Maywood, New Jersey 07607. (201) 368-9171, Fax (201) 368-2029

Ref No: 1087  
Date: 11-21-03  
Engineers: K. Terashima/D. Disinger  
Page: 1 of 2

**To:           Distribution**

**Product:     HL-DV7W and HL-DV7AW, all s/n**

**Subject:     CCD Pulse Board mounting**

**Materials:   6mm x 10mm Kapton film tape (available from many technical supply companies, or web-search “kapton tape”)**

**To reduce the possibility of failure of TR207 on the CCD Pulse Board, the following modification is suggested.**

**NOTE: The CCD Pulse Board contains static-sensitive components. All normal anti-static precautions should be observed when handling this board.**

**Procedure:   Loosen the 4 screws securing the camera right side cover (same side as the LCD display window) and open the cover. Remove the 4 screws securing the CCD Pulse Board (far left board, facing out). Carefully remove the board as you disconnect CN1 (a blind connection on upper-right)). Carefully lift the board slightly and remove CN2 on the bottom rear portion of the board. Place the board on a static-free work surface with the solder side (CN side) up.**

**Place a 6mm x 10mm piece of Kapton tape on the board adjacent to IC118 (see Fig.1). Cut the screw mounting hole through the tape with a sharp instrument. Also check the mounting bracket on the lower left for sharp edges. Sharp edges in the area of the board should be eased with a fine file (see Fig.2).**

**Install the board back into place and test.**

**Contact Ikegami if you prefer not to install this yourself.**

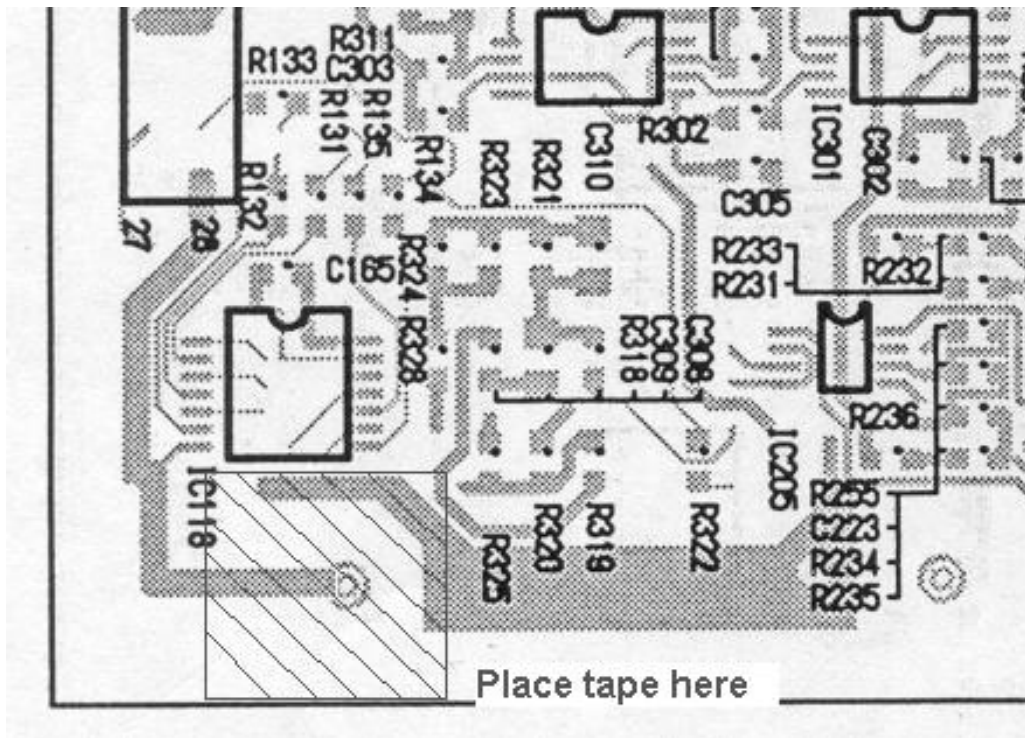
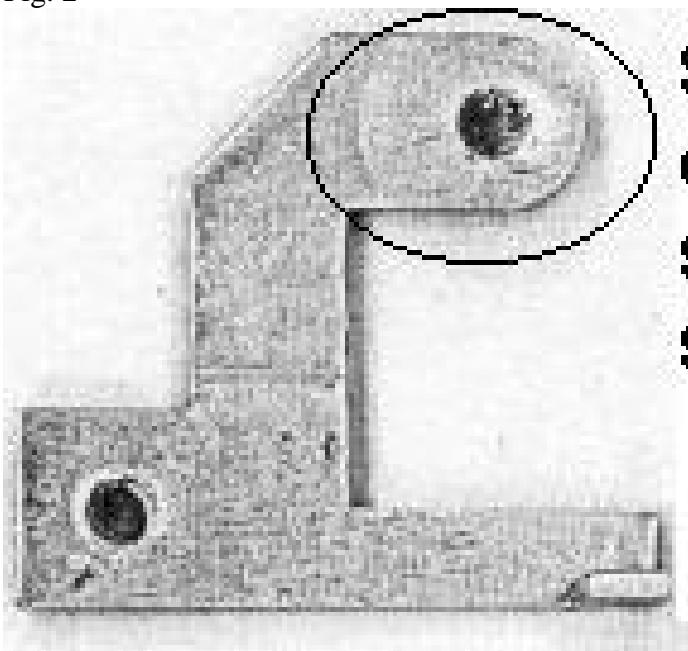


Fig. 1

Fig. 2



**Sharp  
edges  
should be  
smooth**