

TECHNICAL BULLETIN

Ikegami

37 Brook Avenue, Maywood, New Jersey 07607 • (201) 368-9171

Date: 12/7/09
Engineer: Larry Cuccio
Pages: 5

To: Distribution

Product: VF46HDE

Symptom: The viewfinder picture shrinks in vertical height over time.

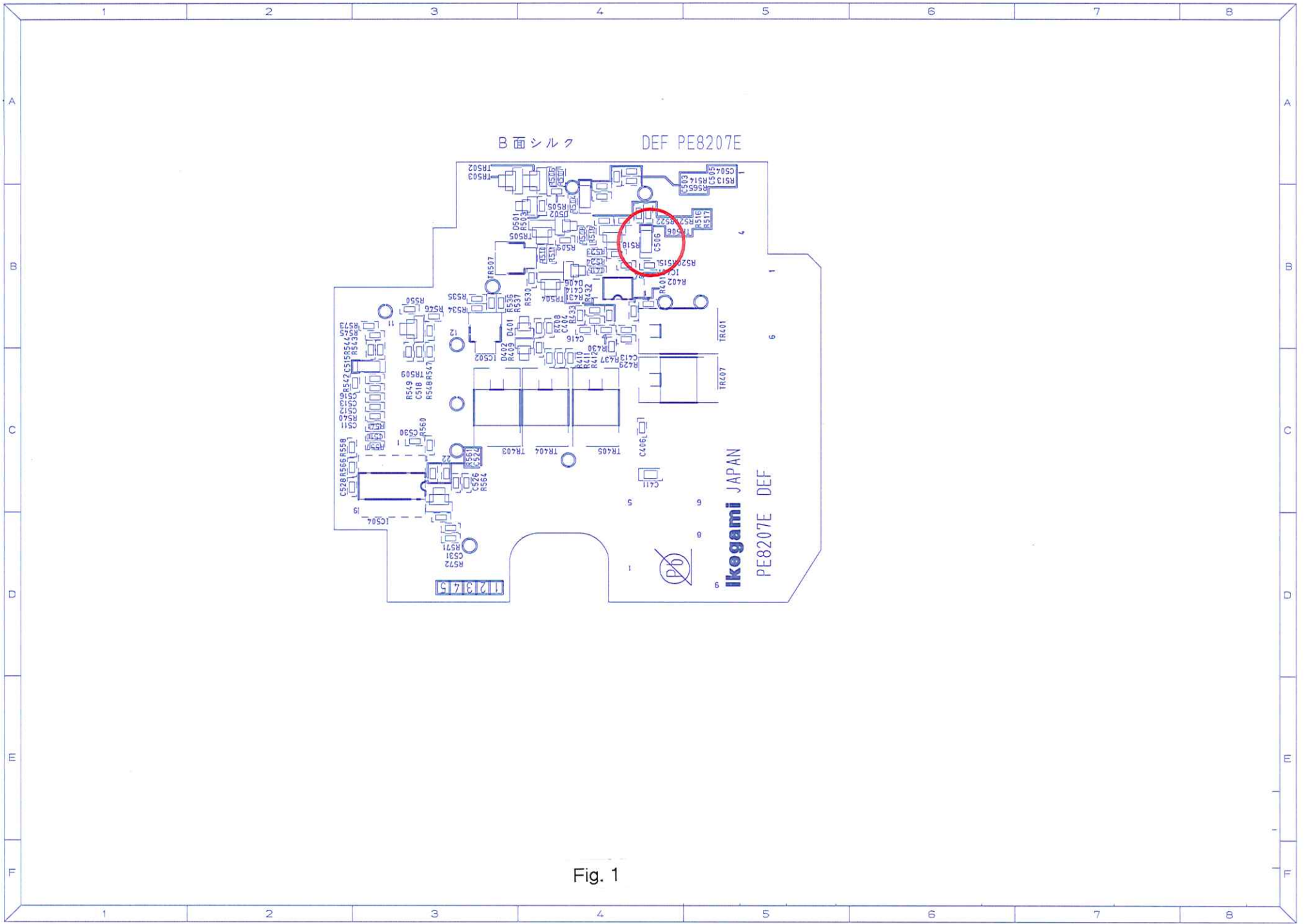
A tantalum capacitor, C506 on the DEF Board, was mounted in the wrong polar direction due to an incorrect silkscreen printing.

Modification Procedure:

1. Disassemble the VF, and remove the DEF Board.
2. Locate and remove C506 (Fig.1). Note the polarity (silver band) of the capacitor, and the silk screening on the board.
3. Replace C506 with a new one, making sure that the polarity is in the opposite direction. Figs. 2 & 3 shows a corrected, current version of this board.

Replacement component

Capacitor, 47uf, P/N 267E 1602 475 MR, Qty 1



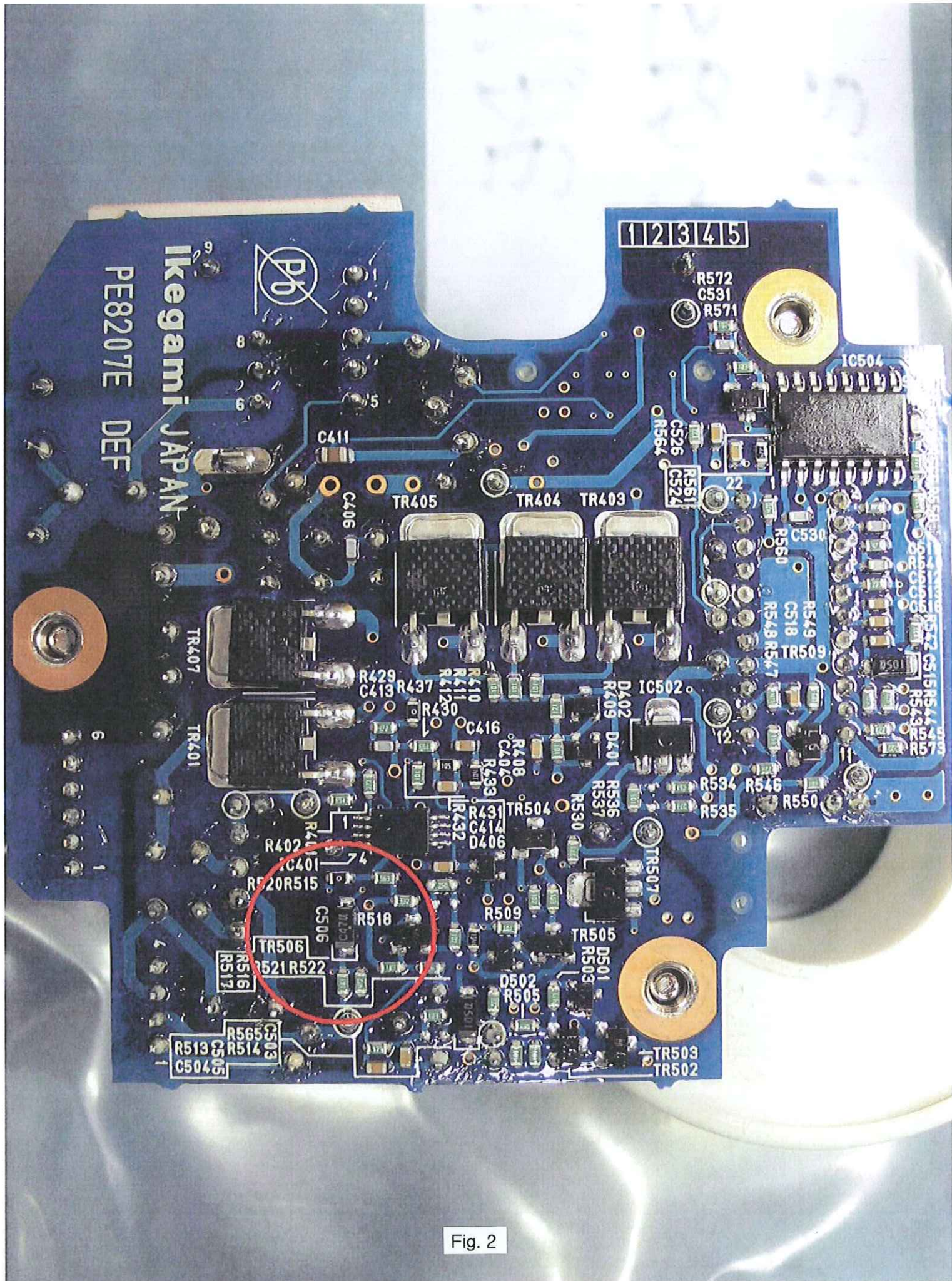


Fig. 2

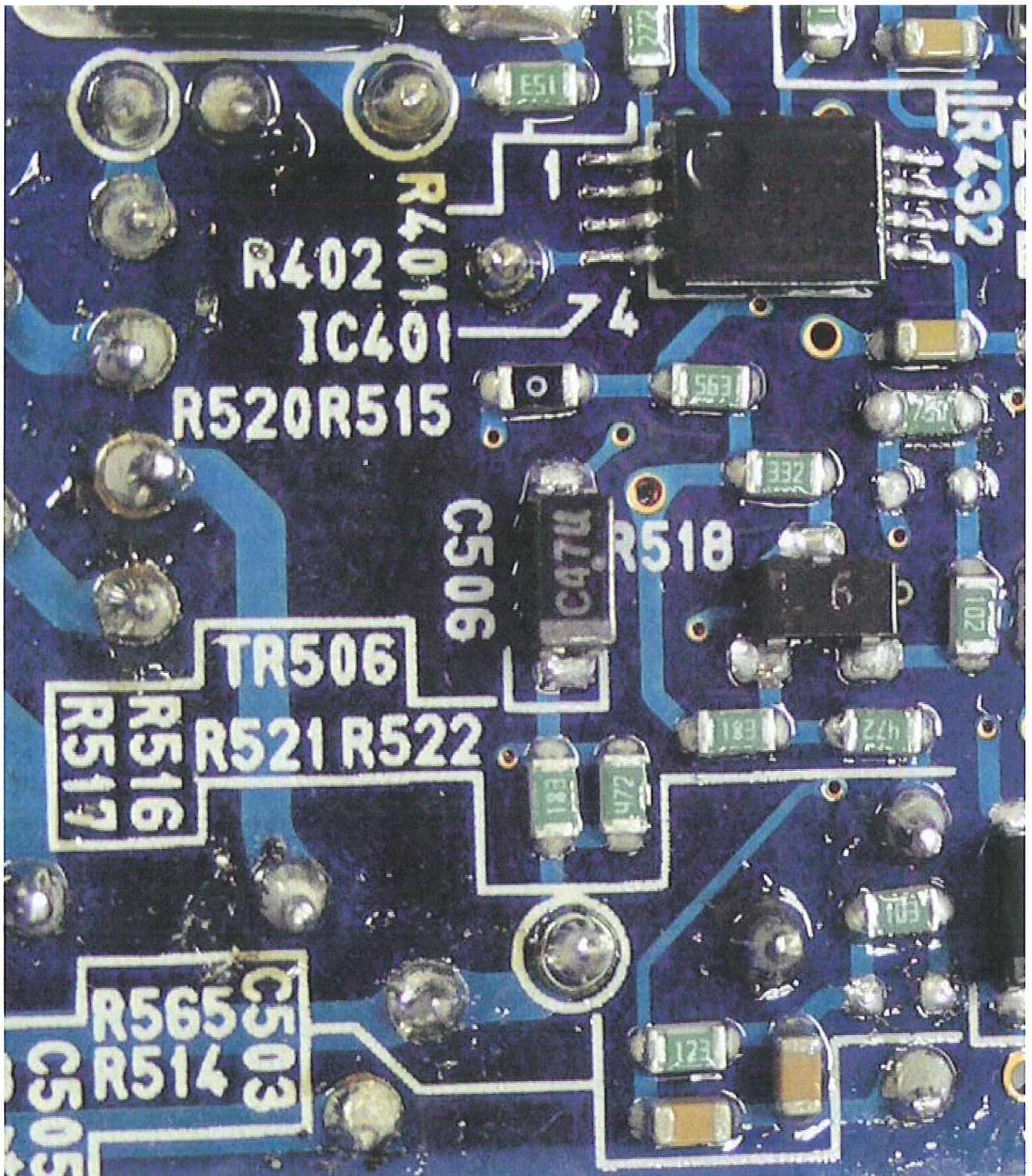


Fig. 3

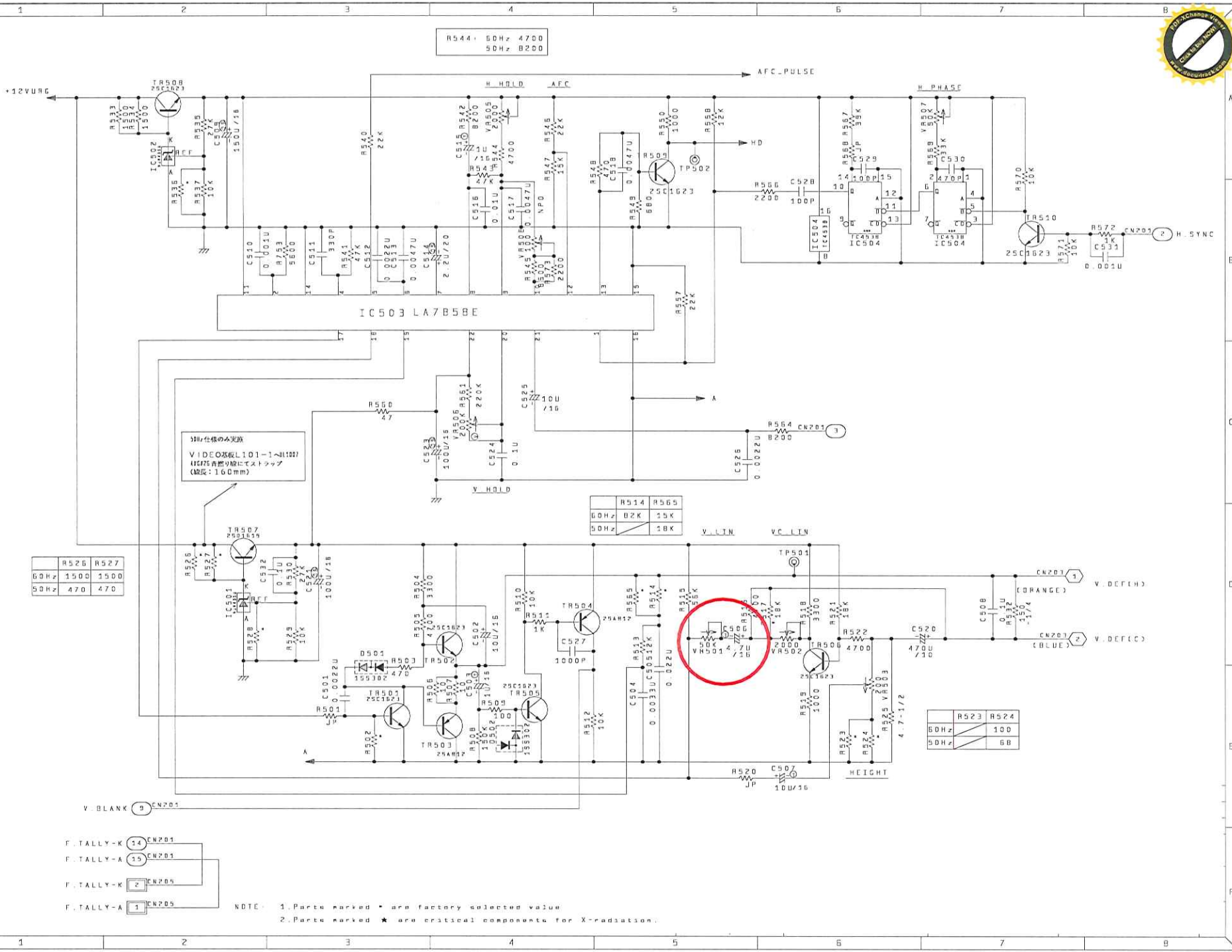


Fig. 4