

Ikegami Camera Accessories

Click on item or page below to go directly to that page

Lens	page 2
Mounts	page 3
Outdoor Housing	page 4
Power Supplies	page 4
Base / Junction Boxes	page 5
PTZ Accessories	page 5
Balun	page 5
Converters	page 6
Isolator	page 6
Switching Power Supply	page 6
PoE Switches	page 6 & 7
PoE Splitters	page 8
Other Accessories	page 8

Design and specifications are subject to Change without notice.



Ikegami Electronics (U.S.A.), Inc.

300E Route 17 South, Mahwah, N. J. 07430-2141

ph: (800) 368-9171 fax (201) 569-1626

URL: www.ikegami.com/security email: CCTV@ikegami.com

Recommended 1/2" Lens

IK-H3Z4512CSIR



3X 4.5mm - 12.5mm
F1.2 Day & Night type
Vari - Focal, Manual Iris
CS-Mount

Contact CCTV@Ikegami.com for detailed Spec

IK-12VG1040ASIR-SQ



Day/Night CCTV and Factory Automation
Focal Length 10-40mm
Mount Type C
Iris Range F/1.4 to 360
Iris Operation Auto (DC)
Focus Operation Manual
Angle of View 37.5° x 27.5°/9.2°x7.0°

Recommended 1/3" Lens

IK-YV5X2.7R4B-SA2L



- 2.7 to 13.5mm Varifocal Lens
- f/1.3 Aperture
- Metal CS Mount

Contact CCTV@Ikegami.com for detailed Spec

IK-YV10X5HR4A-SA2L



- For 1.3 Megapixel Cameras
- Wide Aperture - f/1.6
- Focal Length - 5-50mm / 10x Zoom
- Uses High-accuracy Aspheric Lens

Contact CCTV@Ikegami.com for detailed Spec

IKVZ-A212VDCIR-3MP

- 2.8 - 12mm
- 1:1.4 (With ND Spot Filter)
- 4.3 X
- F1.4 - Approx. 360
- 4.8 x 3.6mm (Ø6 mm)
- Focus Manual
- Zoom Manual
- Iris: IG(Auto Close System)

Contact CCTV@Ikegami.com for detailed Spec

IKVZ-A338VDCIR-MP

- 3.8 - 8.0mm
- 1:1.4 (With ND Spot Filter)
- 10 X
- F1.4 - Approx. 360
- 4.8 x 3.6mm (Ø6 mm)
- Focus Manual
- Zoom Manual
- Iris: IG(Auto Close System)

Contact CCTV@Ikegami.com for detailed Spec

IK-DTV5513



- Megapixel Lens
- 5.5mm-50mm
- F1.3, Manual Iris
- Made in Japan

IK-DTV3X0310D



CS-Mount
3.0 to 8.5mm
f/1.0 to 360
DC Auto Iris Lens
with Manual Zoom
and Focus

Contact CCTV@Ikegami.com for detailed Spec

TG2Z1816FCS



- Megapixel Lens
- 5.5mm-50mm
- F1.3, Manual Iris
- Made in Japan

Contact CCTV@Ikegami.com for detailed Spec

Design and specifications are subject to Change without notice.



Ikegami Electronics (U.S.A.), Inc.

300E Route 17 South, Mahwah, N. J. 07430-2141

ph: (800) 368-9171 fax (201) 569-1626

URL: www.ikegami.com/security email: CCTV@ikegami.com

Universal Mounts for Box Cameras



CMB-1W / CMB-1B

- 180 degree tilt
- 1/4" / 20 threads throughout
- All parts interchangeable
- Available in Black or White
- Base plate 2-3/8" diameter
- All steel construction
- Weight Capacity: 10 lbs.
- Specifically designed for today's smaller cameras
- Each set includes two 2" shafts, 2" X-base, 1" base extender, 2-3/8" round base, 1 head



WH-4 / WH-4G

- 6" (152.4mm) overall mount length
- Includes two mounting bases that screw easily into the machined aluminum alloy shaft [0.875" (22.2mm) in diameter]
- Use the Tri-Foot Base [4" (101.6mm) outside diameter with three 0.265" (6.7mm) holes on a 3.25" (82.5mm) bolt circle] for solid surfaces, or the T-Bar Clip for drop ceiling rails
- Full range of motion at the camera: 210° Tilt, 360° Turn & 360° Rotation
- Knob and tamper-resistant set-screw adjusting options included
- 1/4-20 mounting stud with locking



Wall, Ceiling & Pendant Mounts



EE-BRK03W

Wall Mount Bracket for
EE-VR42IR2812
EE-D4030W-3.6



EE-BRK09W

Wall Mount Bracket for
EE-IPD4MP2812MZ



EE-WMB08

Wall Mount Bracket for
EE-35MZ2812



IK-DSB-PWMVCN-CG-W

IK-DSB-PWMVCN-CG-B

Wall Mount Bracket for
ISD-A35/A35S Series, White/Black



IK-WM100-I-W

Wall Mount Bracket for
ISD-A33/A33S Series



XHGD12

Wall Mount Bracket for
ECO-D12-2812

new model coming

Ceiling Mount for ISD-
A33/A33S Series



EE-CMPL3W and

EE-PIPExxx

Ceiling Mount Plate
& Pipe for EE Seires



XHG-6229N2

In Ceiling Mount for
ISD-A33/A33S Series
ISD-A35/A35S Series
IPD-DM11



IK-WB100-I-W

Pendant Mount for
ISD-A33/A33S Series

Design and specifications are subject to Change without notice.



Ikegami Electronics (U.S.A.), Inc.

300E Route 17 South, Mahwah, N. J. 07430-2141

ph: (800) 368-9171 fax (201) 569-1626

URL: www.ikegami.com/security email: CCTV@ikegami.com

Outdoor Aluminum Housing

CAMH-500K

- Universal Mounting Bracket fits most brands of camera mounts
- Provision to lock housing
- Color: Beige
- Shipping weight: 2lbs. 3oz
- Dimensions: 9" x 6" x 4.5" (LxWxH)
- Built-in heater and blower
- Power: 24VAC, 36VA



CAMH-800K

- Universal Mounting Bracket fits most brands of camera mounts
- Provision to lock housing
- Color: Beige
- Shipping weight: 2lbs. 10.8oz.
- Dimensions: 15" x 5.6" x 4.5" (LxWxH)
- Built-in heater and blower
- Power: 24VAC, 36VA

Power Supplies



PS-2420

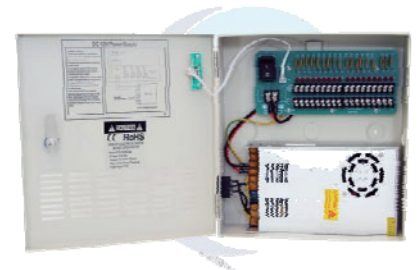
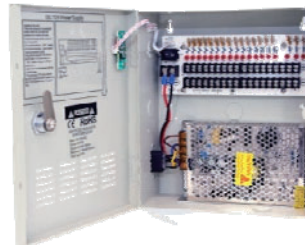
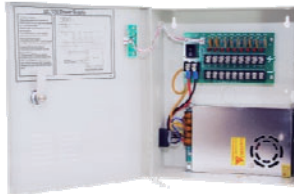
- Input: 120V 60Hz * Input: 120V 60Hz
- Output: 24VAC ~ 20VA * Output: 24VAC ~ 50VA
- Class II Power Supply * Class II Power Supply
- Two Screw Terminal Output
- Individually Boxed
- UL and CUL Recognized

PS-2412

- Innovative design allows you to Use either 24V AC Taps or 12VDC taps independently, or use both together to power 2 units simultaneously
- 24 Volts AC 635MA
 - 12 Volts DC 1000MA
 - UL/CUL

MGT2450

- Input: 120V 60Hz
 * Output: 24VAC ~ 20VA *
 Output: 24VAC ~ 50VA
 * Class II Power Supply * Class II Power Supply
 * Two Screw Terminal Output *
 Two Screw Terminal Output
 Individually Boxed
 UL and CUL Recognized



EE-PB12095A

- 12V DC, 4CH
 PTC Fuse
 5 Amp Power Box
 Fuse Rating: 2.0 Amp
 110V AC input
 Power on/off switch
 LED indicator for each channel
 surge protected
 Regulated and filtered
 9 3/4"(H) x 8"(W) x 3 3/4"(D)

EE-PB120910A

- 12V DC, 9 CH
 PTC Fuse
 10 Amp Power Box
 Fuse Rating: 2.0 Amp
 110V AC input
 Power on/off switch
 LED indicator for each channel
 surge protected
 Regulated and filtered
 9 3/4"(H) x 8"(W) x 3 3/4"(D)

EE-PB121810A

- 12V DC, 18CH
 PTC Fuse
 10 Amp Power Box
 Fuse Rating: 1.1 Amp
 110V AC input
 Power on/off switch
 LED indicator for each channel
 surge protected
 Regulated and filtered
 9 3/4"(H) x 8"(W) x 3 3/4"(D)

EE-PB121820A

- 12V DC, 18CH
 PTC Fuse
 20 Amp Power Box
 Fuse Rating: 2.3 Amp
 110V ~ 240V AC input
 Power on/off switch
 LED indicator for each channel
 Surge protected
 Regulated and filtered
 10.2"(H) x 10.5"(W) x 3"(D)

Design and specifications are subject to Change without notice.



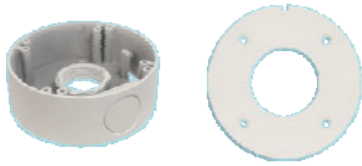
Ikegami Electronics (U.S.A.), Inc.

300E Route 17 South, Mahwah, N. J. 07430-2141

ph: (800) 368-9171 fax (201) 569-1626

URL: www.ikegami.com/security email: CCTV@ikegami.com

Base / Junction Boxes



EE-AADJBOX2 & EE-AADJPLT

Base (Junction) Box & Mounting Plate for
EE-D4002W-3.6
EE-B4042W-3.6



EE-AIJBOX

Base (Junction) Box for
EE-IPB4MP3312MZ
EE-IPB8MP2812MZ



EE-BB1W & EE-PL-BB1W

Base (Junction) Box & Mounting Plate for
EE-HDBIRMZ
EE-VR42IR2812
EE-IPE4MP3312MZ

PTZ Accessories



EE-CM401

Corner Mount
Outdoor / Indoor Use
Aluminum / Beige



EE-PM403

Pole Mount for EE-PTZ3M4794
Outdoor / Indoor Use
Aluminum / Beige



EE-PTZCM404

Ceiling Mount for EE-PTZ3M4794
Outdoor / Indoor Use
Aluminum / Beige

Balun



EE-ACVBAL

- Passive HD Transceiver:
 - Push-Terminal with 15cm Cable
- Compatible with HDCVI / HDTV / AHD
- Transmission Distance: 720P up to 1,312ft (400m) / 1080P up to 820ft (250m)
- Plug and Play
- Anti-Interference
- Super Lighting Protection
- ESD Protection
- ABS Outer Shell
- No Power Require

EE-ACVPDBAL

- Transmit or Receive real-time color or B&W video signal
- Color video up to 1300ft (400m) in pairs via UTP Cat5e/6
- Power signal up to 750ft (250m) in pairs; 12V/24V, DC/AC
- Transmit PTZ data signal up to 1000ft (300m) in pairs
- No power required
- Built-in TVS for surge protection
- Exceptional interference rejection



EE-ACVPBAL

- Passive HD Transceiver - Video + Power
- Real Time Stable Transmit HD CVI / TVI / AHD Video Signal
- Transmission via UTP CAT5 / 5e / 6
- Long Distance with Passive Receiver
- Plug and Play, Simplified Project Wiring
- Built-In Surge & Transient Protection
- Super Interference Rejection
- LED Transmitting-Indicator

Design and specifications are subject to Change without notice.



Ikegami Electronics (U.S.A.), Inc.

300E Route 17 South, Mahwah, N. J. 07430-2141

ph: (800) 368-9171 fax (201) 569-1626

URL: www.ikegami.com/security email: CCTV@ikegami.com

Converters, Isolator & Switching Power Supply



ACDC2412-300MA

- INPUT POWER: AC20~28V; DC16~30V
- OUTPUT POWER: DC12V Regulated
- CABLE: Input side: 11.8 inch, 22AWG 2-Pin Terminal Block, Output side: 11.8 inch, 22AWG 2.1mm DC Plug
- DIMENSIONS: 1.77 x 1.0 x 0.75 inch



ACDC2412-800MA

- Input Power: AC20~28V; DC16~30V
- Output Power: DC12V regulated
- Output Current: 800mA
- Input side: 11.8", 22AWG 2-Pin terminal block
- Output side: 11.8", 22AWG 2.1mm DC plug
- Dimension: 2.35" X 1.0" X 1.75"



IK-GLI-01

- Insertion loss : 0.5db
- Frequency response: 0-3db at 10Mhz
- Input/output resistance: 75 Ohm
- Isolation voltage: 600 VDC (Min)
- Insulation resistance: 100m Ohm
- Transient voltage suppressors: 12 Vrms
- Balun: V0

IK-12500

- 12V DC 500MA Plug In Power Supply
- Primary: 120 Volt 60 Hz
- Secondary: 12 VDC 500MA
- 2.1mm Coax plug
- 6 foot cord
- UL Approved
- Individually Boxed

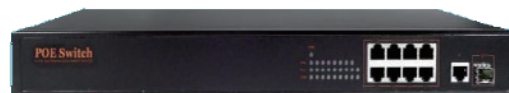


PoE Switch



EE-POE4PAT

- IEEE802.3at Power Over Ethernet (PoE) compliant
- Supports 10/100Mbps fast Ethernet
- 4 x 100Mbps auto-MDIX PoE Port
- Automatically detects the PoE Class Level of a Powered Device
- 1Gbps bandwidth
- Forwarding rate: 100Mbps / 148,800 pps; 10Mbps / 14,880 pps
- Status LEDs: System Power, PoE, 100Mbps, and Link / Activity
- Full Wire-Speed non-blocking reception & transmission
- Store-and-forward switching method
- Back pressure Flow Control for Half-Duplex Mode
- IEEE 802.3X Flow Control for Full-Duplex Mode
- Powers down unused ports and when a connected device is in standby mode
- Plug & Play
- Sturdy Rack Mountable metal case
- Easy installation & use, no need to convert by software and network protocol



EE-POE8PAT

- Port:10 Ports with 8 ports POE, 100Mbit each port
- Backbound Bandwidth: 3.6 Gbps
- Uplink port and SFP both Gigabit
- IEEE802.3 at Standard
- Select uplink/SFP
- Size: 440*180*44mm
- Built-in Power adapter : 250W
- 1U

PoE Switches continued next page

Design and specifications are subject to Change without notice.



Ikegami Electronics (U.S.A.), Inc.

300E Route 17 South, Mahwah, N. J. 07430-2141

ph: (800) 368-9171 fax (201) 569-1626

URL: www.ikegami.com/security email: CCTV@ikegami.com

PoE Switchers, continued



EE-POE16PAT

- 20 ports PoE switch with 16 POE port
- 100Mbit each PoE port
- 2 Gigabit uplink ports
- 2 Gigabit fiber optical ports
- IEEE802.3 at standard
- Power transmission distance 100m
- size: 440*350*45mm
- Total Power:400W



EE-POE24

- 28 ports PoE switch with 24 PoE port, 100Mbit each PoE port
- 2 Gigabit fiber optical ports
- IEEE802.3 af standard
- Power transmission distance 100m
- size: 440*350*45mm
- Total power:400W



EE-RXTX-101 KIT : Consists of : EE-RX101 & EE-TX101-POE (can be purchased separately)

EE-RX101

- Support cascade mode; maximum four transmitters can be cascaded
- Ethernet transmission distance reaches max up to 1000m
- Post transmission distance reaches max up to 1000m with max 12W output power
- Provide power to devices; max up to 12V / 1A
- Meet standards of IEEE802.3 10BAS-T, IEEE802.3u 1000BASE-TX
- Support IEEE802.3af standard; automatically detect and recognize IEEE802.3af standard PD equipments and provide power to PD equipments
- High speed modem technology, the physical bandwidth is up to 1000Mbps (bi-directional)
- Multi-Stage strong surge and lightning protection design
- Low power consumption, automatic error-correction coding technology
- Easy to install, plug-and-play mode, fast network
- Include extra 53V DC/1.25A power adaptor

EE-TX101-POE

- Support cascade mode; maximum four transmitters can be cascaded
- Ethernet receiver distance reaches max up to 1000m
- Post transmission distance reaches max up to 1000m with max 12W output power
- Provide power to devices; max up to 12V / 1A
- Meet standards of IEEE802.3 10BAS-T, IEEE802.3u 1000BASE-TX
- Support IEEE802.3af standard; automatically detect and recognize IEEE802.3af standard PD equipments and provide power to PD equipments
- High speed modem technology, the physical bandwidth is up to 1000Mbps (bi-directional)
- Multi-Stage strong surge and lightning protection design
- Low power consumption, automatic error-correction coding technology
- Easy to install, plug-and-play mode, fast network

Contact CCTV@Ikegami.com for detailed Spec

Design and specifications are subject to Change without notice.



Ikegami Electronics (U.S.A.), Inc.

300E Route 17 South, Mahwah, N. J. 07430-2141

ph: (800) 368-9171 fax (201) 569-1626

URL: www.ikegami.com/security email: CCTV@ikegami.com

PoE Splitters

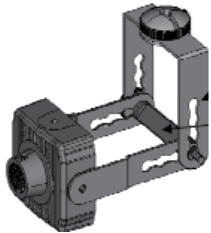


EE-POESPLIT-01

Output power 12W
Output 12V/0.8A(Max)
Input DC48V
Support 10/100Mbps

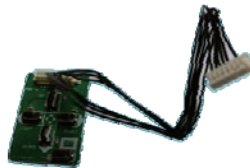
IEEE802.3af standard
Size: 84x 23 x 24mm
Power in support: 1236 pin
non-isolated

Other Camera Accessories



CBK-A14

ATM Bracket for ISD-A14/A14S
Pictured with Camera



SUT-A14

Spare Control Board
for ISD-A14/A14S



E4-191J-150

4-Pin Auto Iris Connector
w/Connector Shell



RC-ISD2012 for ISD-A series Cameras (not for "S" series)

Maximum distance between camera and remote controller

RG-59/U (3C-2V) : 623 ft (190m)

RG-6/U (5C-2V) : 1148ft (350m)

OSD Control : Up, Down, Left, Right

Battery life : Approx. 5 hrs when power is on

Sleep mode: After 45 seconds or unplug coax

Ambient temperature range: 14°F to 122°F

Case dimension: H 80mm x W 55mm x T 6mm

Contact CCTV@Ikegami.com for detailed Spec



RCU-801 Remote Set-Up Unit for ICD-809/879

Camera Connected : 1 unit

Input Signal : Composite video signal of connected camera

Output Signal: VBS 1.0Vp-p/75ohms

Cable Extension between unit and camera :

Max. 500m (with 5C-2V cable)

Contact CCTV@Ikegami.com for detailed Spec

Design and specifications are subject to Change without notice.



Ikegami Electronics (U.S.A.), Inc.

300E Route 17 South, Mahwah, N. J. 07430-2141

ph: (800) 368-9171 fax (201) 569-1626

URL: www.ikegami.com/security email: CCTV@ikegami.com