



IPD-BX300

2MP Indoor Box IP Network Camera



Professional for Professionals!

Ikegami's newest addition to its high performance line of Mega-Pixel IP Network Camera Series, is the IPD-BX300 box camera, includes 2MP high definition images, excellent reliability and high sensitivity.

It is the best solution for monitoring both daytime and nighttime activities, featuring ONVIF compliance for ease of integration.

The IPD-BX300HD series provides high definition images, high sensitivity, excellent picture quality and Enhanced Digital WDR to meet entire surveillance application needs.

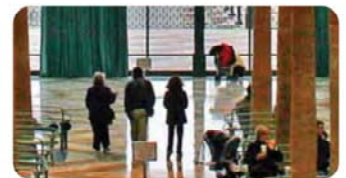
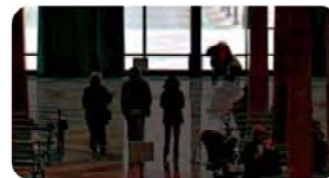
FEATURES

- 1/3" progressive scan CMOS sensor.
- Enhanced Digital WDR
- New generation 3DNR technology
- Latest H.264 Compression
- Smearless
- Auto Iris Function
- Day/Night Function
- PoE Compatible
- Audio Input/output
- ONVIF Profile S, test tool 14.06 conformant
- Automatic White Balance (ATW or AWC)
- Analog Composite Video Output
- Day & Night Function Engine
- Privacy Mask
- Backlight Compensation
- Motion Detection
- Optional IPv4
- Privacy Zone

High-quality Picture and High Definition



E-Wide Dynamic Range



Suggested Applications

- Financial
- Government
- Education
- Hospitality
- Retail
- Parking Garages

IPD-BX300

SPECIFICATIONS

Model	IPD-BX300HD
Camera Style	Indoor Box
Image Sensor	1/3" progressive scan CMOS sensor
Resolution	1080P(1920x1080), SXGA(1280x960), 720P(1280x720), VGA(640x480), VGA (640x360), QVGA(320x240), QVGA (320x176)
Frame Rate	1080P(1920 x 1080) @ 30fps 1080P(1920 x 1080) @ 25fps
Video Compress	H.264 / M-JPEG
Video Streaming	Dual Streaming
Minimum Illumination	Color: 0.3 lux at 50 IRE, F1.2 B/W: 0.01 lux at 50 IRE, F1.2
Signal System	NTSC PAL
WDR	Enhanced Digital WDR
Digital Noise Reduction	New generation 3DNR technology
Day/Night	Mechanical ICR
S/N Ratio	More than 50dB when AGC off
Lens Mount	CS Mount
Iris Control	Auto (DC) Iris
Gain Control	Off / On, Selectable
Gamma Correction	0.45/1
Video Output	1 x composite video out
White Balance	ATW(2500K-10000K) / Manual
Electric Shutter	1/7.5-1/10000 sec 1/6.25-1/10000 sec
Slow Shutter	Yes
Audio In/Out	Audio In
Video Output	1 x composite video out
Motion Detection	Yes
Back Light Compensation	Off / On (4 Area Selectable)
Privacy Zone	Yes
Network Protocols	ARP, DHCP, DNS, HTTP, HTTPS, ICMP, IGMP, IPv4, NTP, RTSP/RTCP/RTP, TCP, TLS/TTLS, UDP
Security Access	Multiple user group, password protected
Web Browsing Requirements	Full-feature, multi-web browser support: Internet Explorer, Chrome, Firefox
Applications	IP Finder
ONVIF	ONVIF Profile S, test tool 14.06 conformant
Users	1 Administrator, 1 Viewers
Alarm In/Out	Alarm In x1
Enclosure Color	Standard Grey
Connectors	Network: RJ-45 connector, Audio In: 2-pin removable terminal block Alarm in: 2-pin removable terminal block
Power Requirement	PoE IEEE 802.3af class 0
Power Consumption	6W (Max)
Surge Protection	EN55024 certified
Operating Temperature	-10°C to 50°C
Operating Humidity	90%, non-condensing
Storage Temperature	-20°C to 60°C
Storage Humidity	90%, non-condensing
Standards	CE/FCC, Class B certified, VCCI certified
Dimensions	56 x 125 x 69mm
Weight	400g

Design and specifications are subject to Change without notice.

IKEGAMI ELECTRONICS, (U.S.A.) INC.

URL: <http://www.ikegami.com> email: cctv@ikegami.com

Headquarters
West Coast
South West
South East
Midwest

37 Brook Avenue, Maywood, NJ 07607 Phone (201)368-9171 Fax (201)569-1626
Redondo Beach, CA 90278 Ph (310)297-1900 Fax (310)536-9550
Waxahachie, TX 75167 Ph (972)869-2363 Fax (972)556-1057
Deerfield Beach, FL 33441 Ph (954)571-7177 Fax (954)571-7760
Bloomingdale, IL 60108 Ph (603)-372-8777 Fax (603)-372-8777