

Super Resolution on Ikegami MKC-500HD

Introduction

Ikegami MKC-500HD, 3CMOS Full HD Medical Grade Color Camera, High-end model, employs the Super Resolution function with Ikegami unique image processing. It performs to display the sharper and clearer images.

Super Resolution

Super Resolution is originally the technology for the higher image quality on the imaging field and it mainly consists of 1) Image registration and 2) Deblurring. Ikegami MKC-500HD processes the deblurring in real time and supplies the superior images.

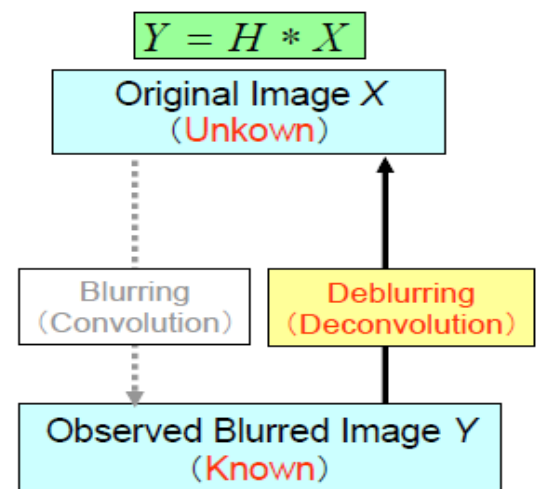
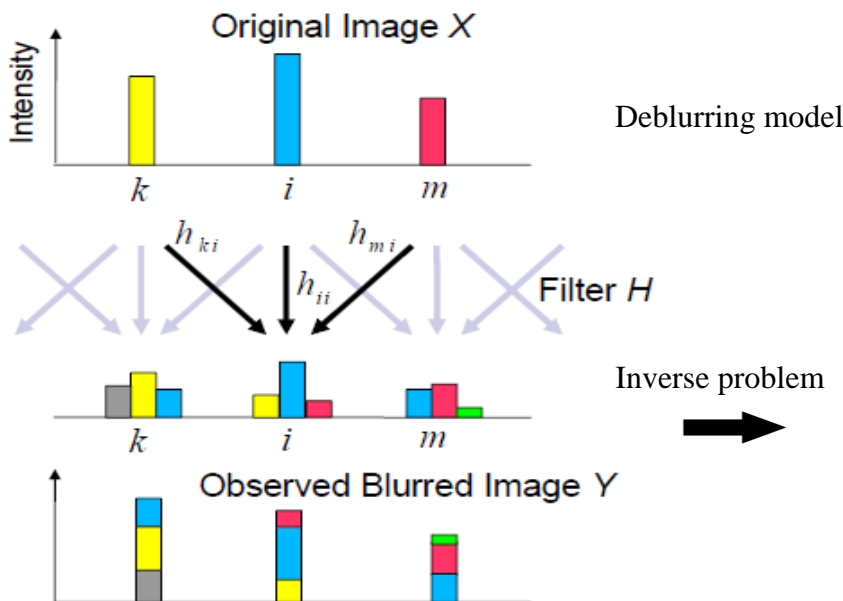
Blurring and noises tend to be accompanied with the characteristics of the optical lens and sensors. Using the deblurring model and Ikegami unique mathematical function, Ikegami MKC-500HD can acquire images as original as possible.



MKC-500HD



Deblurring



Comparison

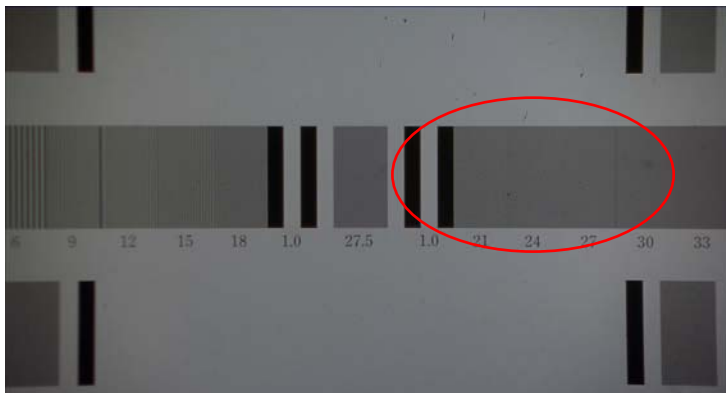


Improvement on the unfocused area (= focal depth)

Super Resolution OFF

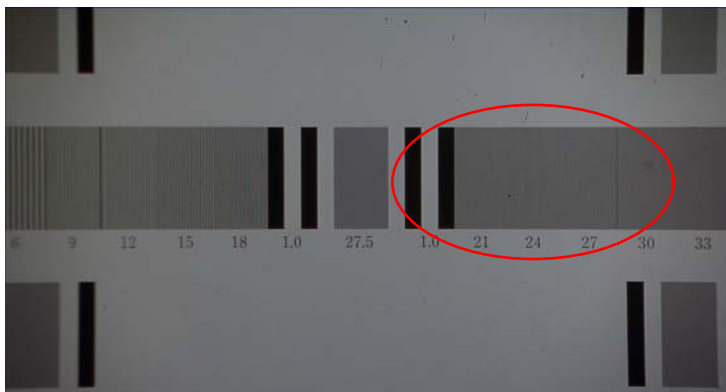


Super Resolution ON



Improvement on the high frequency component modulation (= contrast on the details)

Super Resolution OFF



Super Resolution ON