

色 RTC-21



XYZ-color system camera reproduce the natural color, like a human eye

- wide color gamut
- faithful color
- XYZ system
- Multipoint measurement

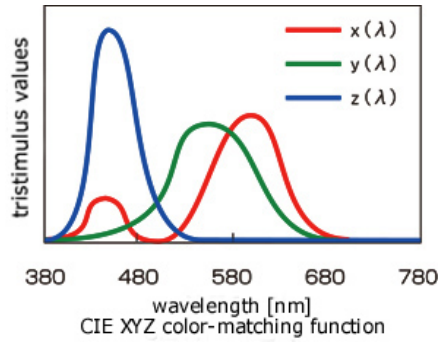


Features

- Real True Color XYZ Camera [RTC-21] will reproduce the object color faithfully.
- Digitized color specification allow easy analyses.
- XYZ system achieve natural color, like a human eye.
- No enhanced color, reproduce real color as a measuring instrument.

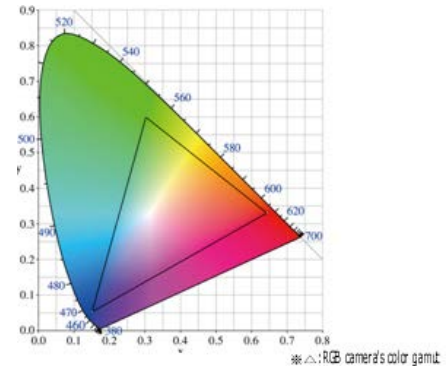
Spectral Characteristics

Using the same sensitivity level XYZ system as human eye. Collect wide range color data, the range beyond standard RGB camera senses.



XYZ Camera vs RGB Camera

Most colors, human eye can detect, can be reproduced faithfully. All colors in the image can be detected quantitatively, and allow color sampling and analyses, based on human eye level.



Color inspection/detection

RTC-21 can detect color difference on the same objects.



Faithful Colors

No enhanced/decorated colors. RTC-21 colors are very similar to real colors.



RGB camera



RTC-21

Viewer Application

Special XYZ color viewer application for PC is available, which allow saving data and color analyses.

measured value

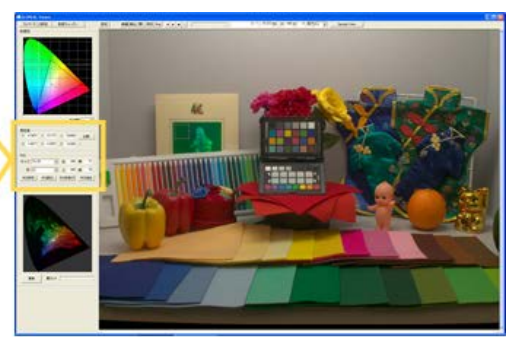
Y: 4.7697 x: 0.1717 y: 0.5490

X: 1.4917 Y: 4.7697 Z: 2.4269 dE:

ROI

: 390 : 71

: 489 : 70



Sample Applications

Paint Market

- Vehicles body.
- Toys, Sporting goods.
- Neon color data.
- Paint inspection, color, scratches, dirt.

Medical Market

- Inspection for sensitive colors.
- Pathological examination .
- Remote medicine.

Cosmetics Market

- Skin color, Lip color.
- Packaging color.

Fiber, Clothing Market

- Color data management.
- For repeated production.
- For color coordinating.

Art Market

- Repair antique, old works, connoisseur.
- Digital archive, real colors.

Printing Market

- Print inspection.
- Print color management.
- Letterpress, offset press, Photogravure press inspection.

Design and specifications are subject to change without notice.

Ikegami IKEGAMI ELECTRONICS (U.S.A.), INC. ■ URL <http://www.ikegami.com>

HEADQUARTERS 37 BROOK AVENUE, MAYWOOD, NJ 07607
Phone:(201) 368-9171 Fax:(201) 569-1626

Ikegami Tsushinki Co.,Ltd. ■ URL:<http://www.ikegami.co.jp/en/>
■ Head Office 5-6-16 Ikegami, Ohta-ku, Tokyo 146-8567, Japan TEL.03-5700-1111/FAX.03-5700-1137

Ikegami Electronics (Europe) GmbH ■ URL:<http://www.ikegami.de>
■ Headquarters Ikegami Strasse 1, D-41460 Neuss, Germany TEL.02131-1230/FAX. 02131-102820

U223A123-IB

